

Distribution of Faculty Raises, Academic Year 2014-2015

Note: This report is based on data provided by the Provost's Office. The data contained in this report are accurate as of September 1, 2015 and include all transactions processed by 11/1/2015. The amount and percentage of total raise for faculty members who received a mid-year and/or end-of-year special merit raise are included in the "special merit pools" category, including any raise they received from the regular raise pool. Faculty who received no raise were assigned to the regular raise pool category for the purpose of calculating their percentage of raise (0%).

Distribution of raises by division and track

T/TT faculty	1
NTT faculty	1
All faculty.....	2

Distribution of special merit raises

T/TT faculty	3
NTT faculty	4

Percentage of raises, by division

All faculty.....	5
Agriculture, Food and Natural Resources.....	7
Arts and Science	9
Business.....	11
Education	13
Engineering.....	15
Graduate Studies/Other	17
Health Professions	19
Human Environmental Sciences.....	21
Journalism.....	23
Law	25
Medicine.....	27
Nuclear Science and Engineering Institute	29
Nursing	31
Public Affairs	33
Veterinary Medicine	35

Distribution of raises, by division, track, and funding source for raise

TT/T faculty

Academic unit	Faculty		Regular merit raise only		Special merit raise		Any raise	
	N	N	%	N	%	N	%	
Ag, Food & Nat Resources	142	55	38.73	48	33.80	103	72.54	
Arts & Science	447	321	71.81	102	22.82	423	94.63	
Business	41	23	56.10	12	29.27	35	85.37	
Education	72	42	58.33	26	36.11	68	94.44	
Engineering	100	64	64.00	31	31.00	95	95.00	
Health Professions	21	19	90.48	2	9.52	21	100.00	
Human Environmental Sciences	44	23	52.27	20	45.45	43	97.73	
Journalism	19	8	42.11	11	57.89	19	100.00	
Law	27	14	51.85	10	37.04	24	88.89	
Medicine	161	98	60.87	36	22.36	134	83.23	
NSEI	4	0	0.00	1	25.00	1	25.00	
Nursing	15	7	46.67	6	40.00	13	86.67	
Public Affairs	6	4	66.67	2	33.33	6	100.00	
Veterinary Medicine	67	32	47.76	35	52.24	67	100.00	
Total	1166	710	60.89	342	29.33	1052	90.22	

NTT faculty

Academic unit	Faculty		Regular merit raise only		Special merit raise		Any raise	
	N	N	%	N	%	N	%	
Ag, Food & Nat Resources	56	37	66.07	3	5.36	40	71.43	
Arts & Science	93	52	55.91	1	1.08	53	56.99	
Business	22	21	95.45	0	0.00	21	95.45	
Education	20	14	70.00	5	25.00	19	95.00	
Engineering	14	7	50.00	0	0.00	7	50.00	
Graduate School/Other	4	4	100.00	0	0.00	4	100.00	
Health Professions	44	39	88.64	4	9.09	43	97.73	
Human Environmental Sciences	11	9	81.82	0	0.00	9	81.82	
Journalism	49	40	81.63	7	14.29	47	95.92	
Law	7	6	85.71	1	14.29	7	100.00	
Medicine	310	247	79.68	6	1.94	253	81.61	
Nursing	7	3	42.86	2	28.57	5	71.43	
Public Affairs	1	0	0.00	0	0.00	0	0.00	
Veterinary Medicine	38	33	86.84	1	2.63	34	89.47	
Total	676	512	75.74	30	4.44	542	80.18	

Distribution of raises, by division, track, and funding source for raise

All faculty

Academic unit	Faculty		Regular merit raise only		Special merit raise		Any raise	
	N	N	%	N	%	N	%	
Ag, Food & Nat Resources	198	92	46.46	51	25.76	143	72.22	
Arts & Science	540	373	69.07	103	19.07	476	88.15	
Business	63	44	69.84	12	19.05	56	88.89	
Education	92	56	60.87	31	33.70	87	94.57	
Engineering	114	71	62.28	31	27.19	102	89.47	
Graduate School/Other	4	4	100.00	0	0.00	4	100.00	
Health Professions	65	58	89.23	6	9.23	64	98.46	
Human Environmental Sciences	55	32	58.18	20	36.36	52	94.55	
Journalism	68	48	70.59	18	26.47	66	97.06	
Law	34	20	58.82	11	32.35	31	91.18	
Medicine	471	345	73.25	42	8.92	387	82.17	
NSEI	4	0	0.00	1	25.00	1	25.00	
Nursing	22	10	45.45	8	36.36	18	81.82	
Public Affairs	7	4	57.14	2	28.57	6	85.71	
Veterinary Medicine	105	65	61.90	36	34.29	101	96.19	
Total	1842	1222	66.34	372	20.20	1594	86.54	

Table: Distribution of 2013-14 (Mid-Year) and 2014-15 (High Performance) Special Raises, and the total, by Academic Unit

T/TT Faculty

Academic Unit	Total Faculty	Mid-Year		High-Performance		Total Special Raise (one/both)		Both special raises	
		N	%	N	%	N	%	N	%
Agriculture, Food and Natural Resources*	142	33	23.24	39	27.46	48	33.80	22	15.49
Arts and Science	447	57	12.75	63	14.09	102	22.82	18	4.03
Business	41	5	12.20	7	17.07	12	29.27	0	0
Education	72	12	16.67	17	23.61	26	36.10	3	4.17
Engineering	100	16	16.00	20	20.00	31	31.00	5	5.00
NSEI	4	1	25.00	0	0	1	25.00	0	0
Health Professions	21	2	9.52	0	0	2	9.52	0	0
Human Environmental Sciences	44	8	18.18	12	27.27	20	45.45	0	0
Journalism	19	10	52.63	7	36.84	11	57.89	6	31.58
Law	27	5	18.52	6	22.22	10	37.04	1	3.70
Medicine	161	29	18.01	21	12.9	36	22.36	14	8.64
Nursing	15	6	40.00	6	40.00	6	40.00	6	40.00
Truman School	6	1	16.67	2	33.33	2	33.33	1	16.67
Veterinary Medicine	67	19	28.36	24	35.82	35	52.24	8	11.94
Total	1166	204	17.50	224	19.21	342	29.33	84	7.20

*There is a discrepancy between the summary tables for the special raises and the detailed data on all raises that were provided by the Provost's office for this division.

Table: Distribution of 2013-14 (Mid-Year) and 2014-15 (High Performance) Special Raises, and the total, by Academic Unit

NTT faculty

Academic Unit	Total Faculty	Mid-Year		High-Performance		Total Special Raise (one/both)	
		N	%	N	%	N	%
Agriculture, Food and Natural Resources*	56	0	0	2	3.57	3	5.36
Arts and Science	93	0	0	1	1.08	1	1.08
Business	22	0	0	0	0	0	0
Education	20	0	0	5	25.0	5	25
Engineering	14	0	0	0	0	0	0
Graduate School/Other	4	0	0	0	0	0	0
Health Professions	44	4	9.09	0	0	4	9.09
Human Environmental Sciences	11	0	0	0	0	0	0
Journalism*	49	0	0	8	16.32	7	14.29
Law*	7	0	0	0	0	1	14.29
Medicine*	310	2	0.65	2	0.65	6	1.94
Nursing	7	0	0	2	28.57	2	28.57
Truman School	1	0	0	0	0	0	0
Veterinary Medicine	38	0	0	1	2.63	1	2.63
Total	676	6	0.90	21	3.11	30	4.44

*There is a discrepancy between the summary tables for the special raises and the detailed data on all raises that were provided by the Provost's office for these divisions.

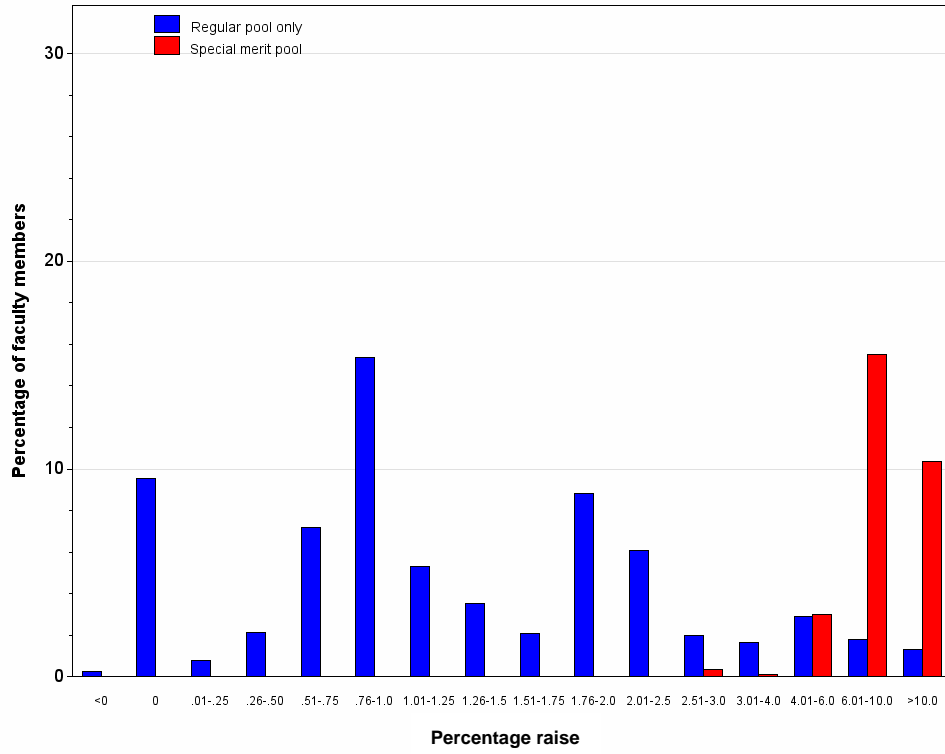
Amount of raise, by track and funding source for raise
 All faculty combined

Raise percentage	TT/T faculty						NTT faculty						All faculty					
	Regular pool only		Special merit pools		Total		Regular pool only		Special merit pools		Total		Regular pool only		Special merit pools		Total	
	Freq	Pct	Freq	Pct	Freq	Pct	Freq	Pct	Freq	Pct	Freq	Pct	Freq	Pct	Freq	Pct	Freq	Pct
<0	3	0.26	.	.	3	0.26	5	0.74	.	.	5	0.74	8	0.43	.	.	8	0.43
0	111	9.52	.	.	111	9.52	129	19.08	.	.	129	19.08	240	13.03	.	.	240	13.03
.01-.25	9	0.77	.	.	9	0.77	1	0.15	.	.	1	0.15	10	0.54	.	.	10	0.54
.26-.50	25	2.14	.	.	25	2.14	5	0.74	.	.	5	0.74	30	1.63	.	.	30	1.63
.51-.75	84	7.20	.	.	84	7.20	7	1.04	.	.	7	1.04	91	4.94	.	.	91	4.94
.76-1.0	179	15.35	.	.	179	15.35	33	4.88	.	.	33	4.88	212	11.51	.	.	212	11.51
1.01-1.25	62	5.32	.	.	62	5.32	25	3.70	.	.	25	3.70	87	4.72	.	.	87	4.72
1.26-1.5	41	3.52	.	.	41	3.52	13	1.92	.	.	13	1.92	54	2.93	.	.	54	2.93
1.51-1.75	24	2.06	.	.	24	2.06	33	4.88	.	.	33	4.88	57	3.09	.	.	57	3.09
1.76-2.0	103	8.83	.	.	103	8.83	169	25.00	.	.	169	25.00	272	14.77	.	.	272	14.77
2.01-2.5	71	6.09	.	.	71	6.09	85	12.57	.	.	85	12.57	156	8.47	.	.	156	8.47
2.51-3.0	23	1.97	4	0.34	27	2.32	27	3.99	.	.	27	3.99	50	2.71	4	0.22	54	2.93
3.01-4.0	19	1.63	1	0.09	20	1.72	40	5.92	1	0.15	41	6.07	59	3.20	2	0.11	61	3.31
4.01-6.0	34	2.92	35	3.00	69	5.92	29	4.29	3	0.44	32	4.73	63	3.42	38	2.06	101	5.48
6.01-10.0	21	1.80	181	15.52	202	17.32	32	4.73	20	2.96	52	7.69	53	2.88	201	10.91	254	13.79
>10.0	15	1.29	121	10.38	136	11.66	13	1.92	6	0.89	19	2.81	28	1.52	127	6.89	155	8.41
Total	824	70.67	342	29.33	1166	100.00	646	95.56	30	4.44	676	100.00	1470	79.80	372	20.20	1842	100.00

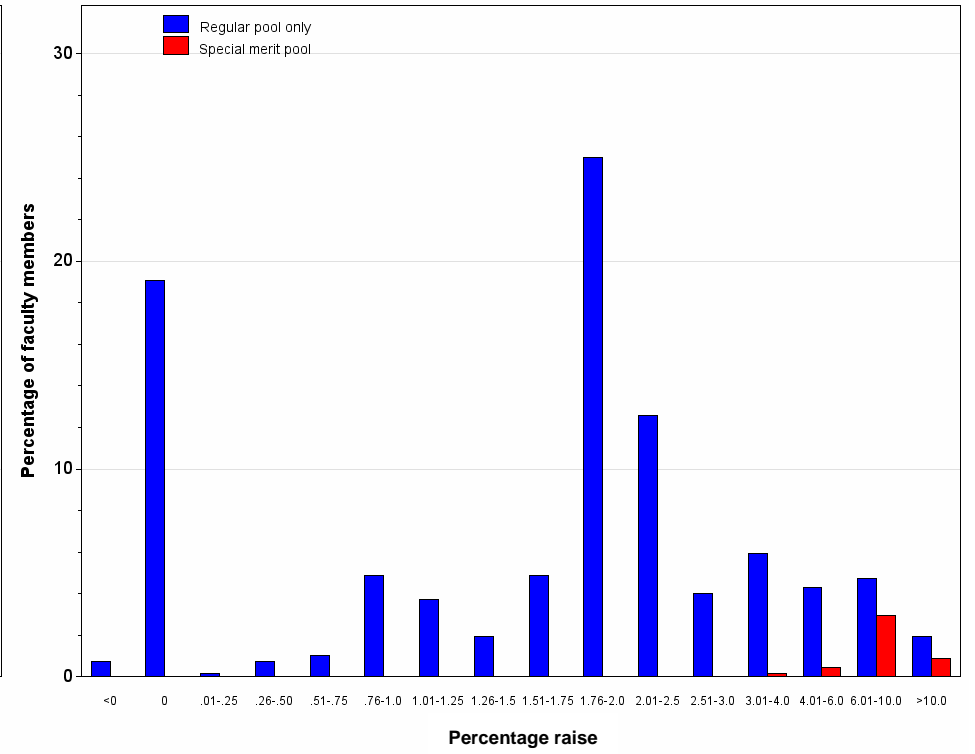
Univariate statistics for faculty raises, by track and funding source for raise

Raise source	Faculty track (TT, NTT)	N	Variable	25th Pctl	Median	Mean	75th Pctl
Regular pool only	TT/T faculty	824	Percent raise	0.65	1.00	1.95	2.00
			Total raise	513.64	999.96	2376.24	2200.81
	NTT faculty	646	Percent raise	1.00	2.00	2.14	2.09
			Total raise	567.43	1646.64	2760.43	3307.56
Special merit pool	TT/T faculty	342	Percent raise	7.29	9.00	10.32	12.19
			Total raise	7622.00	10250.38	11668.74	13493.04
	NTT faculty	30	Percent raise	6.85	8.15	8.46	9.00
			Total raise	4379.88	6088.14	6921.64	8847.08

**Total raise as a percentage of prior year's salary
All TT/T faculty combined, by funding source for raise**



**Total raise as a percentage of prior year's salary
All NTT faculty combined, by funding source for raise**



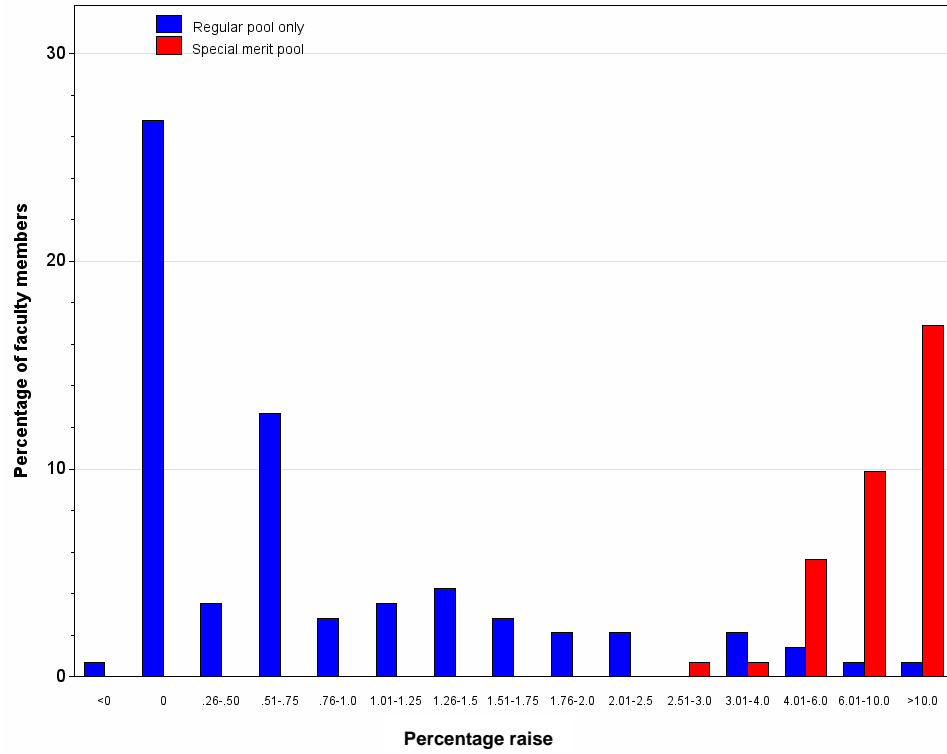
Academic unit = Agriculture, Food and Natural Resources

Raise percentage	TT/T faculty						NTT faculty						All faculty					
	Regular pool only		Special merit pools		Total		Regular pool only		Special merit pools		Total		Regular pool only		Special merit pools		Total	
	Freq	Pct	Freq	Pct	Freq	Pct	Freq	Pct	Freq	Pct	Freq	Pct	Freq	Pct	Freq	Pct	Freq	Pct
<0	1	0.70	.	.	1	0.70	1	0.51	.	.	1	0.51
0	38	26.76	.	.	38	26.76	16	28.57	.	.	16	28.57	54	27.27	.	.	54	27.27
.26-.50	5	3.52	.	.	5	3.52	1	1.79	.	.	1	1.79	6	3.03	.	.	6	3.03
.51-.75	18	12.68	.	.	18	12.68	5	8.93	.	.	5	8.93	23	11.62	.	.	23	11.62
.76-1.0	4	2.82	.	.	4	2.82	5	8.93	.	.	5	8.93	9	4.55	.	.	9	4.55
1.01-1.25	5	3.52	.	.	5	3.52	2	3.57	.	.	2	3.57	7	3.54	.	.	7	3.54
1.26-1.5	6	4.23	.	.	6	4.23	2	3.57	.	.	2	3.57	8	4.04	.	.	8	4.04
1.51-1.75	4	2.82	.	.	4	2.82	3	5.36	.	.	3	5.36	7	3.54	.	.	7	3.54
1.76-2.0	3	2.11	.	.	3	2.11	5	8.93	.	.	5	8.93	8	4.04	.	.	8	4.04
2.01-2.5	3	2.11	.	.	3	2.11	3	1.52	.	.	3	1.52
2.51-3.0	.	.	1	0.70	1	0.70	5	8.93	.	.	5	8.93	5	2.53	1	0.51	6	3.03
3.01-4.0	3	2.11	1	0.70	4	2.82	6	10.71	.	.	6	10.71	9	4.55	1	0.51	10	5.05
4.01-6.0	2	1.41	8	5.63	10	7.04	1	1.79	.	.	1	1.79	3	1.52	8	4.04	11	5.56
6.01-10.0	1	0.70	14	9.86	15	10.56	1	1.79	1	1.79	2	3.57	2	1.01	15	7.58	17	8.59
>10.0	1	0.70	24	16.90	25	17.61	1	1.79	2	3.57	3	5.36	2	1.01	26	13.13	28	14.14
Total	94	66.20	48	33.80	142	100.00	53	94.64	3	5.36	56	100.00	147	74.24	51	25.76	198	100.00

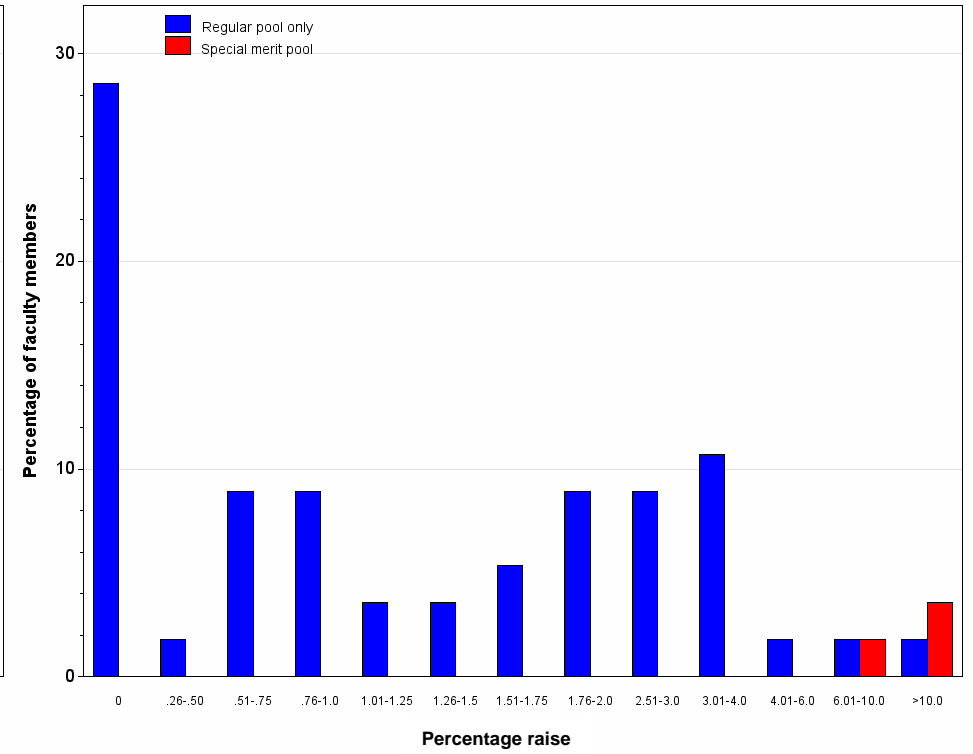
Univariate statistics for faculty raises, by track and funding source for raise

Raise source	Faculty track (TT, NTT)	N	Variable	25th Pctl	Median	Mean	75th Pctl
Regular pool only	TT/T faculty	94	Percent raise	0.00	0.56	1.02	1.19
			Total raise	0.00	500.04	972.71	999.96
	NTT faculty	53	Percent raise	0.00	1.00	1.60	2.56
			Total raise	0.00	999.96	1238.89	2000.04
Special merit pool	TT/T faculty	48	Percent raise	6.97	9.93	10.67	13.55
			Total raise	7783.00	10500.00	12648.78	16983.76
	NTT faculty	3	Percent raise	9.00	13.20	11.99	13.78
			Total raise	8847.08	9435.00	9603.51	10528.44

**Total raise as a percentage of prior year's salary
For TT/T faculty in Ag, Food & Nat Resources, by funding source for raise**



**Total raise as a percentage of prior year's salary
For NTT faculty in Ag, Food & Nat Resources, by funding source for raise**



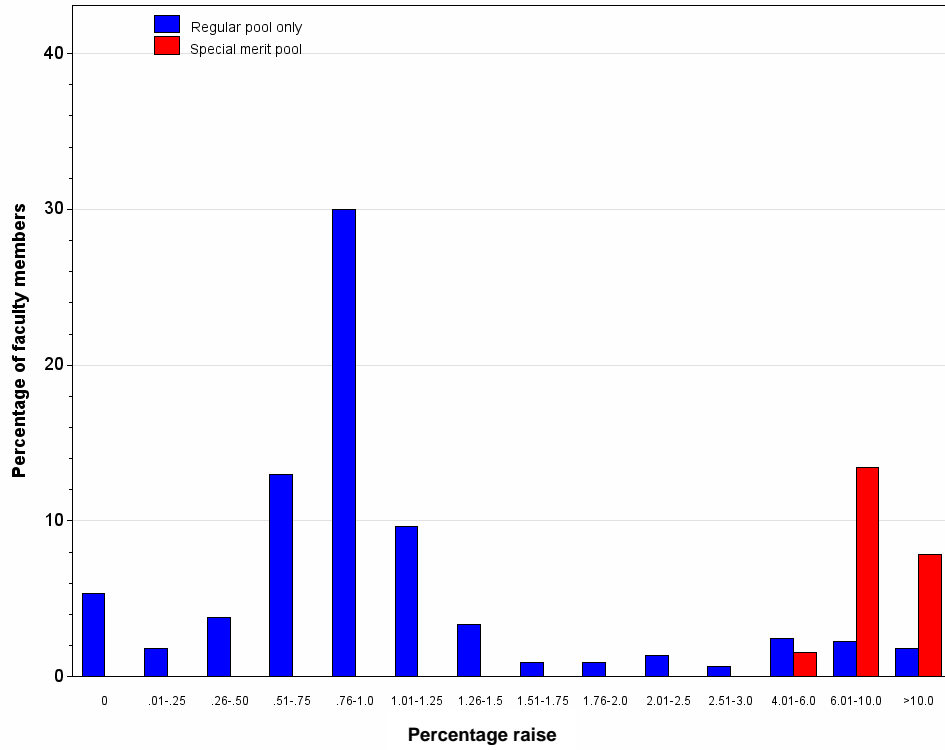
Academic unit = Arts & Science

Raise percentage	TT/T faculty						NTT faculty						All faculty					
	Regular pool only		Special merit pools		Total		Regular pool only		Special merit pools		Total		Regular pool only		Special merit pools		Total	
	Freq	Pct	Freq	Pct	Freq	Pct	Freq	Pct	Freq	Pct	Freq	Pct	Freq	Pct	Freq	Pct	Freq	Pct
<0	3	3.23	.	.	3	3.23	3	0.56	.	.	3	0.56
0	24	5.37	.	.	24	5.37	37	39.78	.	.	37	39.78	61	11.30	.	.	61	11.30
.01-.25	8	1.79	.	.	8	1.79	8	1.48	.	.	8	1.48
.26-.50	17	3.80	.	.	17	3.80	3	3.23	.	.	3	3.23	20	3.70	.	.	20	3.70
.51-.75	58	12.98	.	.	58	12.98	1	1.08	.	.	1	1.08	59	10.93	.	.	59	10.93
.76-1.0	134	29.98	.	.	134	29.98	16	17.20	.	.	16	17.20	150	27.78	.	.	150	27.78
1.01-1.25	43	9.62	.	.	43	9.62	15	16.13	.	.	15	16.13	58	10.74	.	.	58	10.74
1.26-1.5	15	3.36	.	.	15	3.36	3	3.23	.	.	3	3.23	18	3.33	.	.	18	3.33
1.51-1.75	4	0.89	.	.	4	0.89	2	2.15	.	.	2	2.15	6	1.11	.	.	6	1.11
1.76-2.0	4	0.89	.	.	4	0.89	2	2.15	.	.	2	2.15	6	1.11	.	.	6	1.11
2.01-2.5	6	1.34	.	.	6	1.34	3	3.23	.	.	3	3.23	9	1.67	.	.	9	1.67
2.51-3.0	3	0.67	.	.	3	0.67	3	0.56	.	.	3	0.56
3.01-4.0	1	1.08	.	.	1	1.08	1	0.19	.	.	1	0.19
4.01-6.0	11	2.46	7	1.57	18	4.03	3	3.23	.	.	3	3.23	14	2.59	7	1.30	21	3.89
6.01-10.0	10	2.24	60	13.42	70	15.66	3	3.23	1	1.08	4	4.30	13	2.41	61	11.30	74	13.70
>10.0	8	1.79	35	7.83	43	9.62	8	1.48	35	6.48	43	7.96
Total	345	77.18	102	22.82	447	100.00	92	98.92	1	1.08	93	100.00	437	80.93	103	19.07	540	100.00

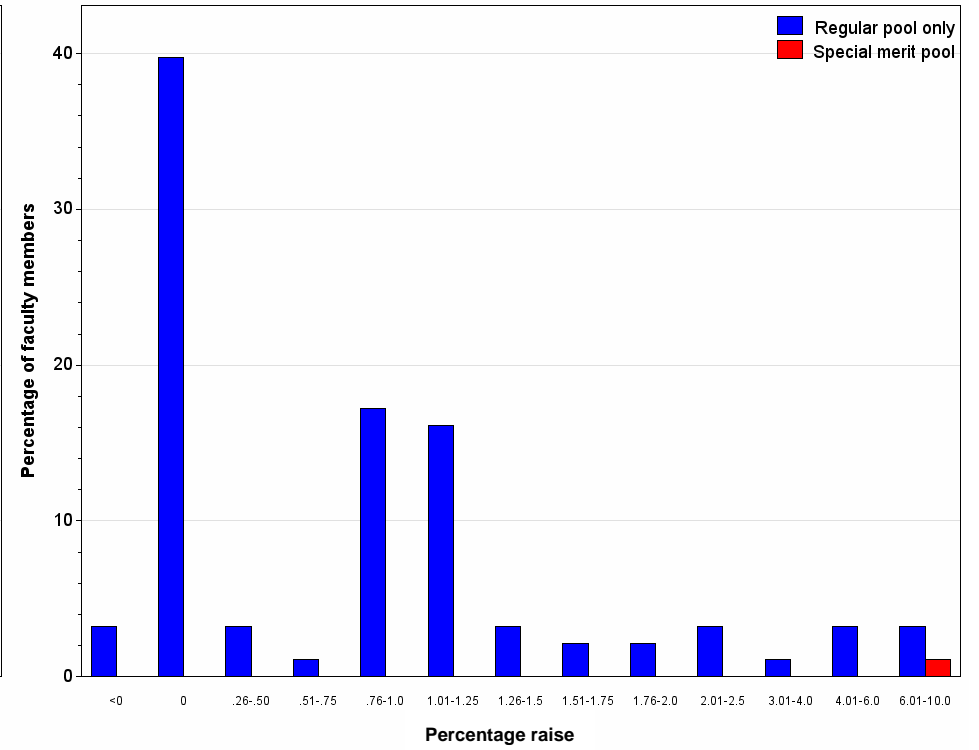
Univariate statistics for faculty raises, by track and funding source for raise

Raise source	Faculty track (TT, NTT)	N	Variable	25th Pctl	Median	Mean	75th Pctl
Regular pool only	TT/T faculty	345	Percent raise	0.64	0.99	1.90	1.00
			Total raise	500.00	654.15	1493.80	1000.00
	NTT faculty	92	Percent raise	0.00	0.98	0.75	1.03
			Total raise	0.00	392.97	404.57	600.00
Special merit pool	TT/T faculty	102	Percent raise	8.14	9.00	11.10	11.68
			Total raise	6897.94	8668.78	10841.08	11413.00
	NTT faculty	1	Percent raise	9.00	9.00	9.00	9.00
			Total raise	4500.00	4500.00	4500.00	4500.00

**Total raise as a percentage of prior year's salary
For TT/T faculty in Arts & Science, by funding source for raise**



**Total raise as a percentage of prior year's salary
For NTT faculty in Arts & Sciences, by funding source for raise**



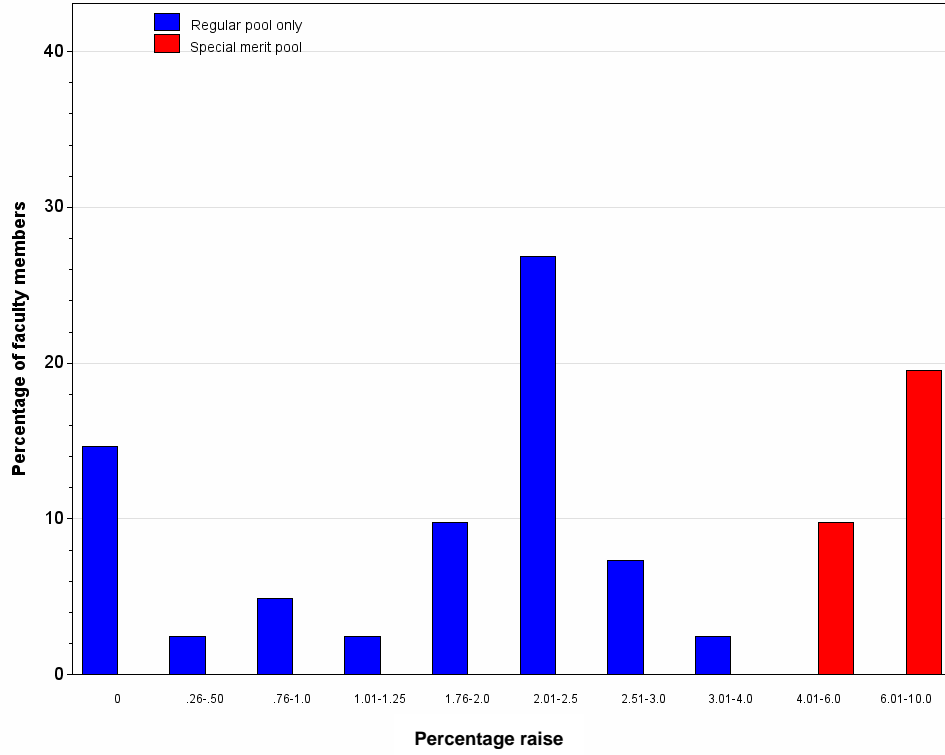
Academic unit = Business

Raise percentage	TT/T faculty						NTT faculty				All faculty					
	Regular pool only		Special merit pools		Total		Regular pool only		Total		Regular pool only		Special merit pools		Total	
	Freq	Pct	Freq	Pct	Freq	Pct	Freq	Pct	Freq	Pct	Freq	Pct	Freq	Pct	Freq	Pct
0	6	14.63	.	.	6	14.63	1	4.55	1	4.55	7	11.11	.	.	7	11.11
.26-.50	1	2.44	.	.	1	2.44	1	1.59	.	.	1	1.59
.51-.75	1	4.55	1	4.55	1	1.59	.	.	1	1.59
.76-1.0	2	4.88	.	.	2	4.88	2	3.17	.	.	2	3.17
1.01-1.25	1	2.44	.	.	1	2.44	1	1.59	.	.	1	1.59
1.51-1.75	2	9.09	2	9.09	2	3.17	.	.	2	3.17
1.76-2.0	4	9.76	.	.	4	9.76	6	27.27	6	27.27	10	15.87	.	.	10	15.87
2.01-2.5	11	26.83	.	.	11	26.83	8	36.36	8	36.36	19	30.16	.	.	19	30.16
2.51-3.0	3	7.32	.	.	3	7.32	1	4.55	1	4.55	4	6.35	.	.	4	6.35
3.01-4.0	1	2.44	.	.	1	2.44	2	9.09	2	9.09	3	4.76	.	.	3	4.76
4.01-6.0	.	.	4	9.76	4	9.76	4	6.35	4	6.35
6.01-10.0	.	.	8	19.51	8	19.51	1	4.55	1	4.55	1	1.59	8	12.70	9	14.29
Total	29	70.73	12	29.27	41	100.00	22	100.00	22	100.00	51	80.95	12	19.05	63	100.00

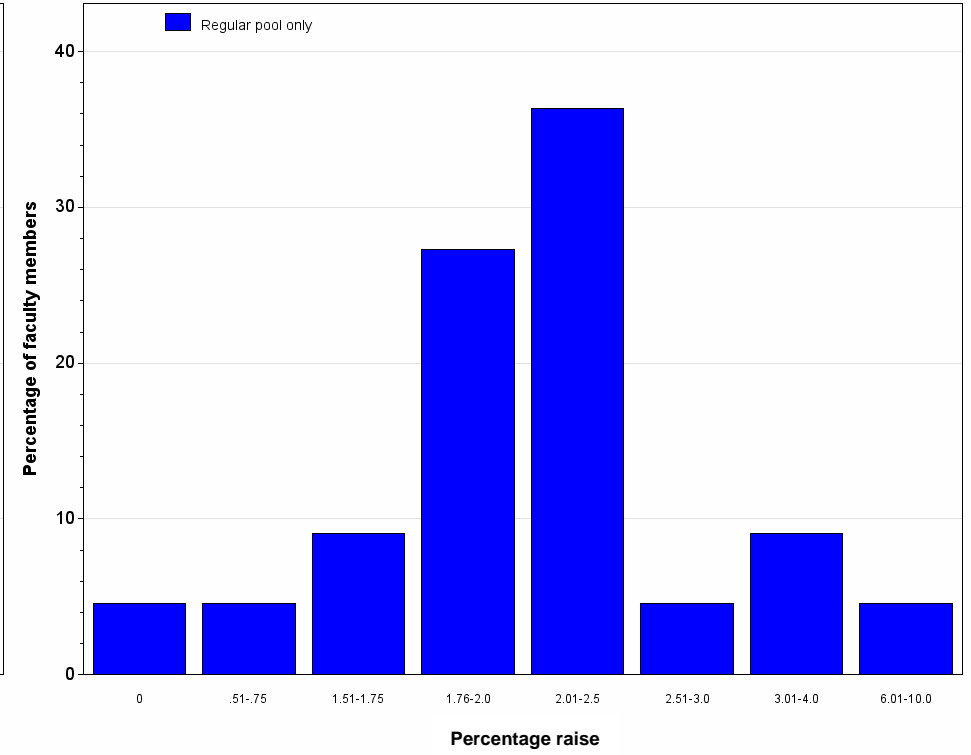
Univariate statistics for faculty raises, by track and funding source for raise

Raise source	Faculty track (TT, NTT)	N	Variable	25th Pctl	Median	Mean	75th Pctl
Regular pool only	TT/T faculty	29	Percent raise	0.84	2.00	1.62	2.44
			Total raise	1688.00	3400.00	3265.87	5563.00
	NTT faculty	22	Percent raise	1.81	2.00	2.19	2.12
			Total raise	1364.00	1675.00	1844.78	2206.00
Special merit pool	TT/T faculty	12	Percent raise	5.50	7.45	7.04	8.30
			Total raise	9423.00	14035.00	12593.92	15144.00

**Total raise as a percentage of prior year's salary
For TT/T faculty in Business, by funding source for raise**



**Total raise as a percentage of prior year's salary
For NTT faculty in Business, by funding source for raise**



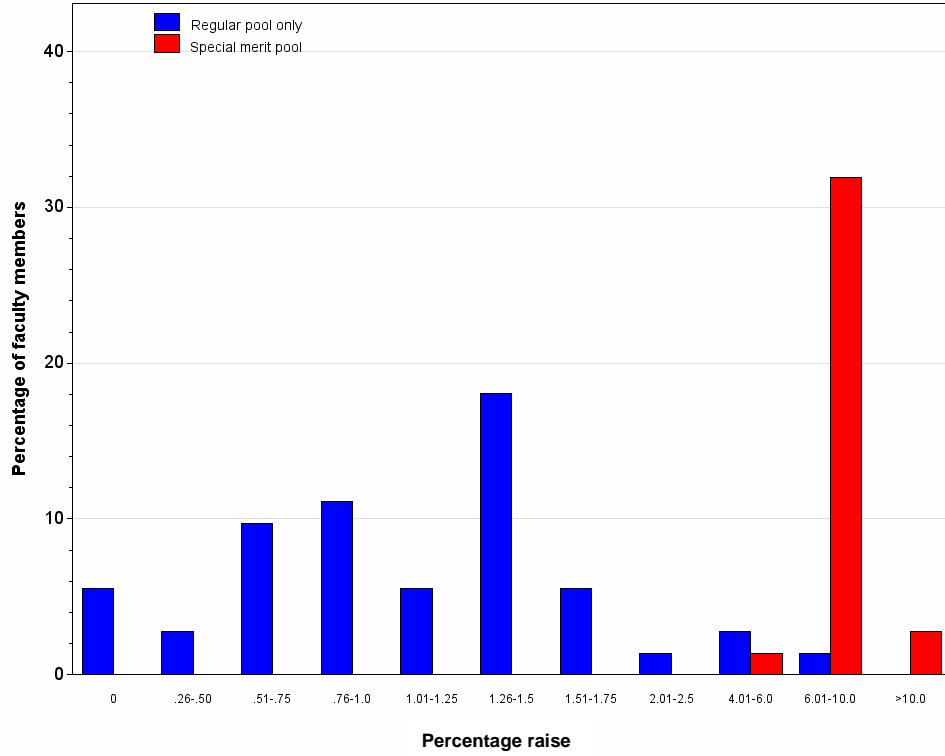
Academic unit = Education

Raise percentage	TT/T faculty						NTT faculty						All faculty					
	Regular pool only		Special merit pools		Total		Regular pool only		Special merit pools		Total		Regular pool only		Special merit pools		Total	
	Freq	Pct	Freq	Pct	Freq	Pct	Freq	Pct	Freq	Pct	Freq	Pct	Freq	Pct	Freq	Pct	Freq	Pct
0	4	5.56	.	.	4	5.56	1	5.00	.	.	1	5.00	5	5.43	.	.	5	5.43
.26-.50	2	2.78	.	.	2	2.78	2	2.17	.	.	2	2.17
.51-.75	7	9.72	.	.	7	9.72	7	7.61	.	.	7	7.61
.76-1.0	8	11.11	.	.	8	11.11	3	15.00	.	.	3	15.00	11	11.96	.	.	11	11.96
1.01-1.25	4	5.56	.	.	4	5.56	4	4.35	.	.	4	4.35
1.26-1.5	13	18.06	.	.	13	18.06	2	10.00	.	.	2	10.00	15	16.30	.	.	15	16.30
1.51-1.75	4	5.56	.	.	4	5.56	2	10.00	.	.	2	10.00	6	6.52	.	.	6	6.52
1.76-2.0	3	15.00	.	.	3	15.00	3	3.26	.	.	3	3.26
2.01-2.5	1	1.39	.	.	1	1.39	1	1.09	.	.	1	1.09
4.01-6.0	2	2.78	1	1.39	3	4.17	1	5.00	.	.	1	5.00	3	3.26	1	1.09	4	4.35
6.01-10.0	1	1.39	23	31.94	24	33.33	1	5.00	4	20.00	5	25.00	2	2.17	27	29.35	29	31.52
>10.0	.	.	2	2.78	2	2.78	2	10.00	1	5.00	3	15.00	2	2.17	3	3.26	5	5.43
Total	46	63.89	26	36.11	72	100.00	15	75.00	5	25.00	20	100.00	61	66.30	31	33.70	92	100.00

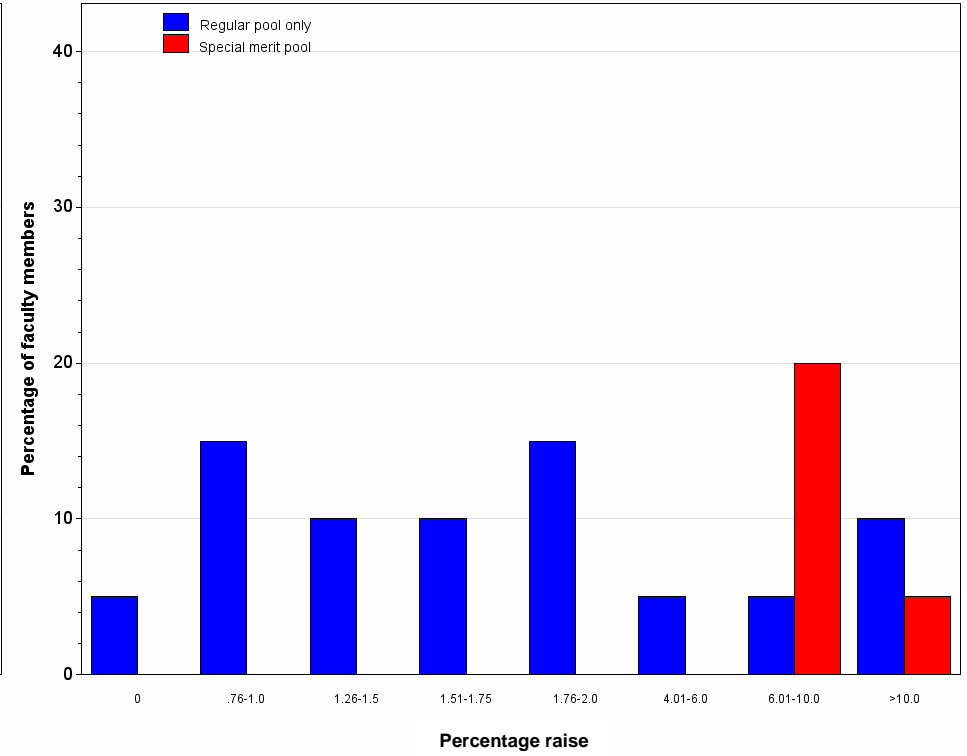
Univariate statistics for faculty raises, by track and funding source for raise

Raise source	Faculty track (TT, NTT)	N	Variable	25th Pctl	Median	Mean	75th Pctl
Regular pool only	TT/T faculty	46	Percent raise	0.75	1.12	1.30	1.50
			Total raise	563.00	851.00	1007.61	1055.00
	NTT faculty	15	Percent raise	1.00	1.75	4.26	5.00
			Total raise	672.00	1025.04	2797.29	2348.04
Special merit pool	TT/T faculty	26	Percent raise	7.07	8.39	8.34	9.00
			Total raise	6000.00	7310.00	8144.31	10720.00
	NTT faculty	5	Percent raise	8.26	8.31	9.05	9.00
			Total raise	5000.00	5030.00	5726.39	5442.00

**Total raise as a percentage of prior year's salary
For TT/T faculty in Education, by funding source for raise**



**Total raise as a percentage of prior year's salary
For NTT faculty in Education, by funding source for raise**



Academic unit = Engineering

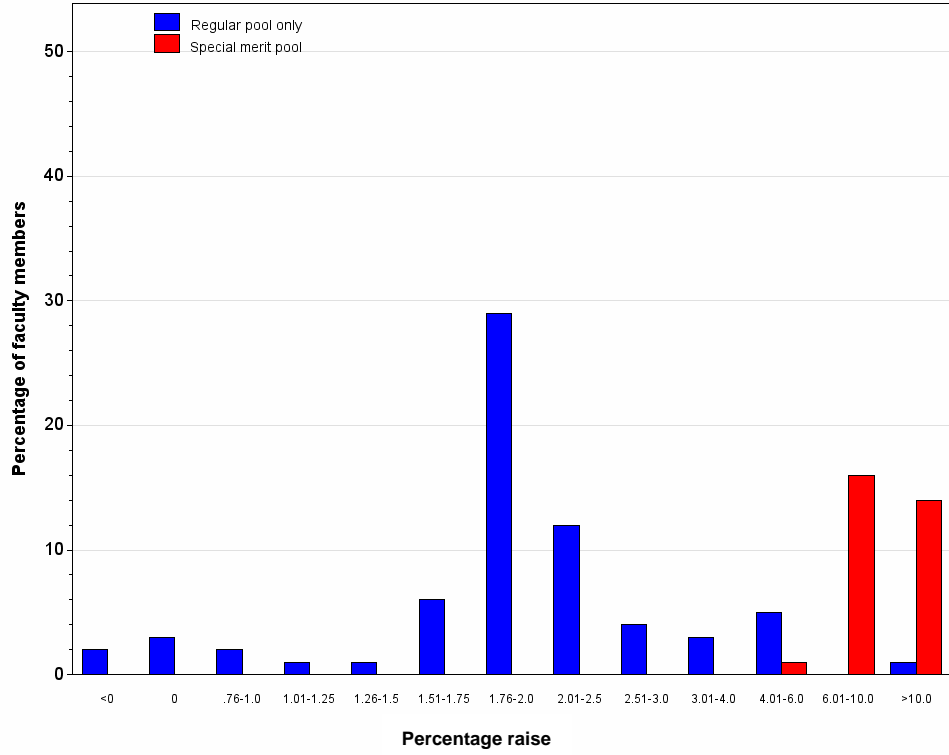
Raise percentage	TT/T faculty						NTT faculty				All faculty					
	Regular pool only		Special merit pools		Total		Regular pool only		Total		Regular pool only		Special merit pools		Total	
	Freq	Pct	Freq	Pct	Freq	Pct	Freq	Pct	Freq	Pct	Freq	Pct	Freq	Pct	Freq	Pct
<0	2	2.00	.	.	2	2.00	1	7.14	1	7.14	3	2.63	.	.	3	2.63
0	3	3.00	.	.	3	3.00	6	42.86	6	42.86	9	7.89	.	.	9	7.89
.76-1.0	2	2.00	.	.	2	2.00	2	1.75	.	.	2	1.75
1.01-1.25	1	1.00	.	.	1	1.00	1	0.88	.	.	1	0.88
1.26-1.5	1	1.00	.	.	1	1.00	1	0.88	.	.	1	0.88
1.51-1.75	6	6.00	.	.	6	6.00	6	5.26	.	.	6	5.26
1.76-2.0	29	29.00	.	.	29	29.00	3	21.43	3	21.43	32	28.07	.	.	32	28.07
2.01-2.5	12	12.00	.	.	12	12.00	1	7.14	1	7.14	13	11.40	.	.	13	11.40
2.51-3.0	4	4.00	.	.	4	4.00	2	14.29	2	14.29	6	5.26	.	.	6	5.26
3.01-4.0	3	3.00	.	.	3	3.00	3	2.63	.	.	3	2.63
4.01-6.0	5	5.00	1	1.00	6	6.00	5	4.39	1	0.88	6	5.26
6.01-10.0	.	.	16	16.00	16	16.00	1	7.14	1	7.14	1	0.88	16	14.04	17	14.91
>10.0	1	1.00	14	14.00	15	15.00	1	0.88	14	12.28	15	13.16
Total	69	69.00	31	31.00	100	100.00	14	100.00	14	100.00	83	72.81	31	27.19	114	100.00

Univariate statistics for faculty raises, by track and funding source for raise

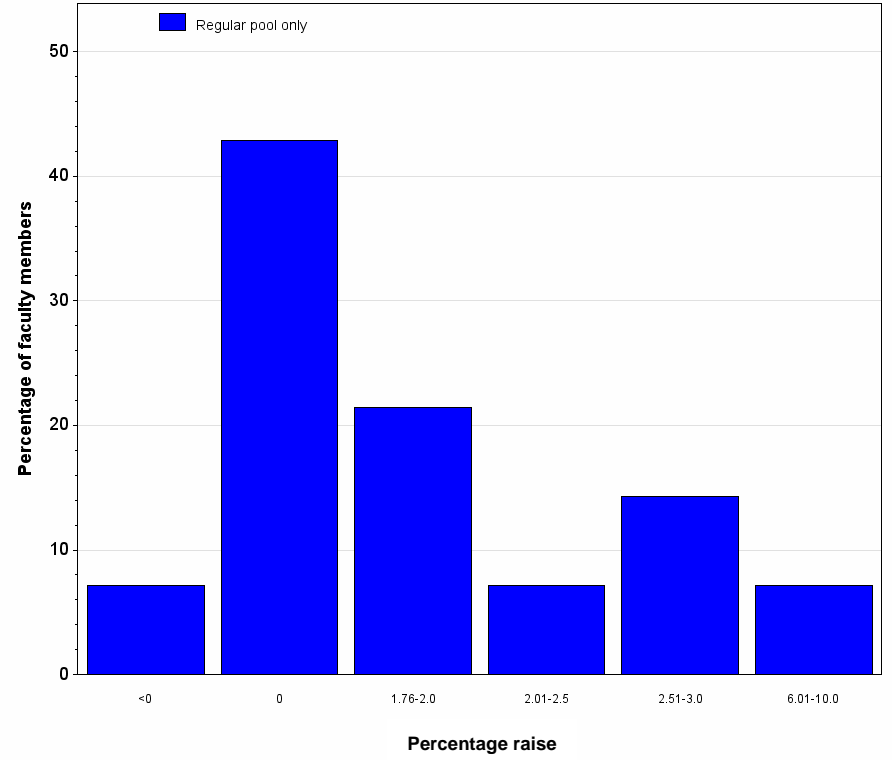
Raise source	Faculty track (TT, NTT)	N	Variable	25th Pctl	Median	Mean	75th Pctl
Regular pool only	TT/T faculty	69	Percent raise	1.88	2.00	2.07	2.37
			Total raise	1700.00	2100.54	2049.19	2538.82
	NTT faculty	14	Percent raise	0.00	1.00	-0.52*	2.00
			Total raise	0.00	499.98	137.44	1740.00
Special merit pool	TT/T faculty	31	Percent raise	8.98	9.76	12.39	13.26
			Total raise	9291.96	11500.00	16445.12	18055.48

*Note: There was one substantial negative adjustment (-\$14,879.92) among NTT faculty. The raises offset this negative adjustment, yielding a positive mean. The percentage change for this individual, however, was -30%; all of the positive percentages didn't add up to this, yielding an average percent raise that is negative.

**Total raise as a percentage of prior year's salary
For TT/T faculty in Engineering, by funding source for raise**



**Total raise as a percentage of prior year's salary
For NTT faculty in Engineering, by funding source for raise**



Amount of raise, by track and funding source for raise

Academic unit = Graduate Studies/Other*

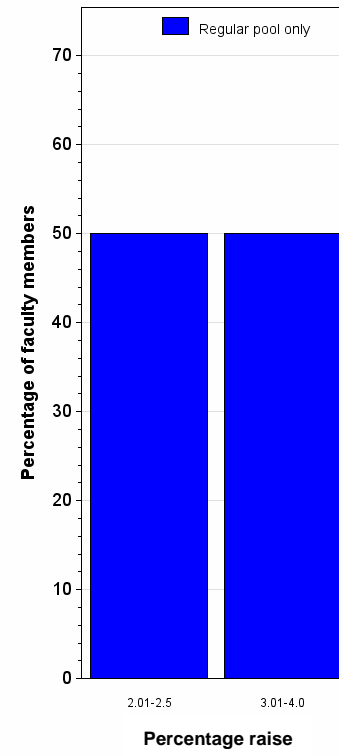
Raise percentage	NTT faculty				All faculty			
	Regular pool only		Total		Regular pool only		Total	
	Freq	Pct	Freq	Pct	Freq	Pct	Freq	Pct
2.01-2.5	2	50.00	2	50.00	2	50.00	2	50.00
3.01-4.0	2	50.00	2	50.00	2	50.00	2	50.00
Total	4	100.00	4	100.00	4	100.00	4	100.00

Univariate statistics for faculty raises, by track and funding source for raise

Raise source	Faculty track (TT, NTT)	N	Variable	25th Pctl	Median	Mean	75th Pctl
Regular pool only	NTT faculty	4	Percent raise	2.15	2.65	2.82	3.50
			Total raise	1774.98	2077.80	2132.37	2489.76

*Note: the data represent 4 faculty members who do not work within an academic department: 2 in extension, 1 in a center, and 1 in graduate studies.

**Total raise as a percentage of prior year's salary
For NTT faculty in Graduate School/Other, by funding source for raise**



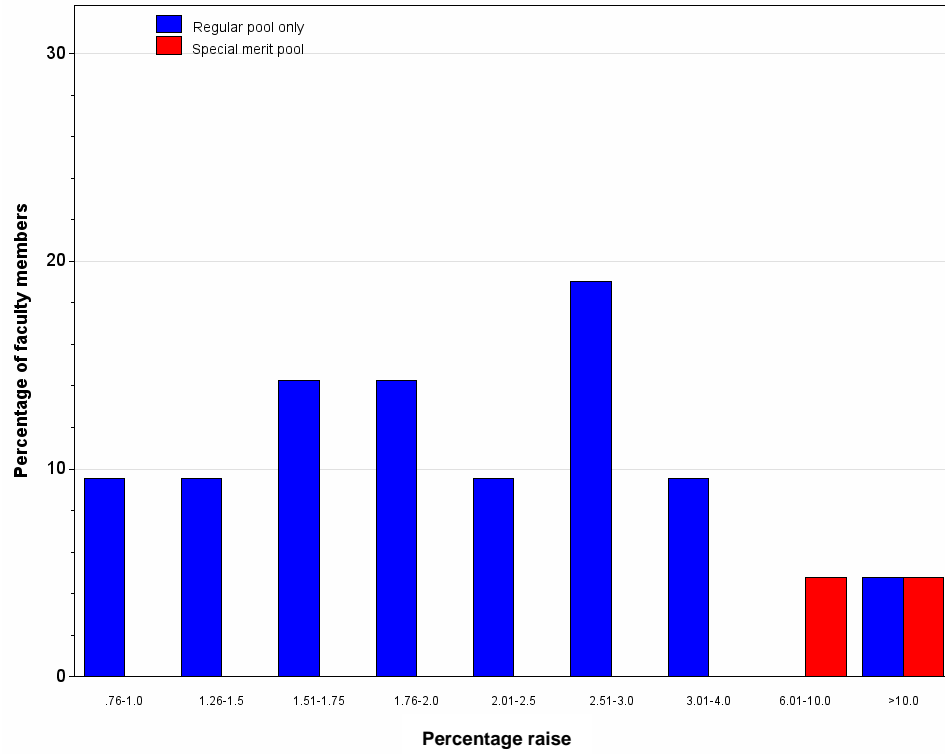
Academic unit = Health Professions

Raise percentage	TT/T faculty						NTT faculty						All faculty					
	Regular pool only		Special merit pools		Total		Regular pool only		Special merit pools		Total		Regular pool only		Special merit pools		Total	
	Freq	Pct	Freq	Pct	Freq	Pct	Freq	Pct	Freq	Pct	Freq	Pct	Freq	Pct	Freq	Pct	Freq	Pct
0	1	2.27	.	.	1	2.27	1	1.54	.	.	1	1.54
.76-1.0	2	9.52	.	.	2	9.52	2	3.08	.	.	2	3.08
1.01-1.25	2	4.55	.	.	2	4.55	2	3.08	.	.	2	3.08
1.26-1.5	2	9.52	.	.	2	9.52	5	11.36	.	.	5	11.36	7	10.77	.	.	7	10.77
1.51-1.75	3	14.29	.	.	3	14.29	5	11.36	.	.	5	11.36	8	12.31	.	.	8	12.31
1.76-2.0	3	14.29	.	.	3	14.29	9	20.45	.	.	9	20.45	12	18.46	.	.	12	18.46
2.01-2.5	2	9.52	.	.	2	9.52	7	15.91	.	.	7	15.91	9	13.85	.	.	9	13.85
2.51-3.0	4	19.05	.	.	4	19.05	5	11.36	.	.	5	11.36	9	13.85	.	.	9	13.85
3.01-4.0	2	9.52	.	.	2	9.52	4	9.09	.	.	4	9.09	6	9.23	.	.	6	9.23
6.01-10.0	.	.	1	4.76	1	4.76	2	4.55	3	6.82	5	11.36	2	3.08	4	6.15	6	9.23
>10.0	1	4.76	1	4.76	2	9.52	.	.	1	2.27	1	2.27	1	1.54	2	3.08	3	4.62
Total	19	90.48	2	9.52	21	100.00	40	90.91	4	9.09	44	100.00	59	90.77	6	9.23	65	100.00

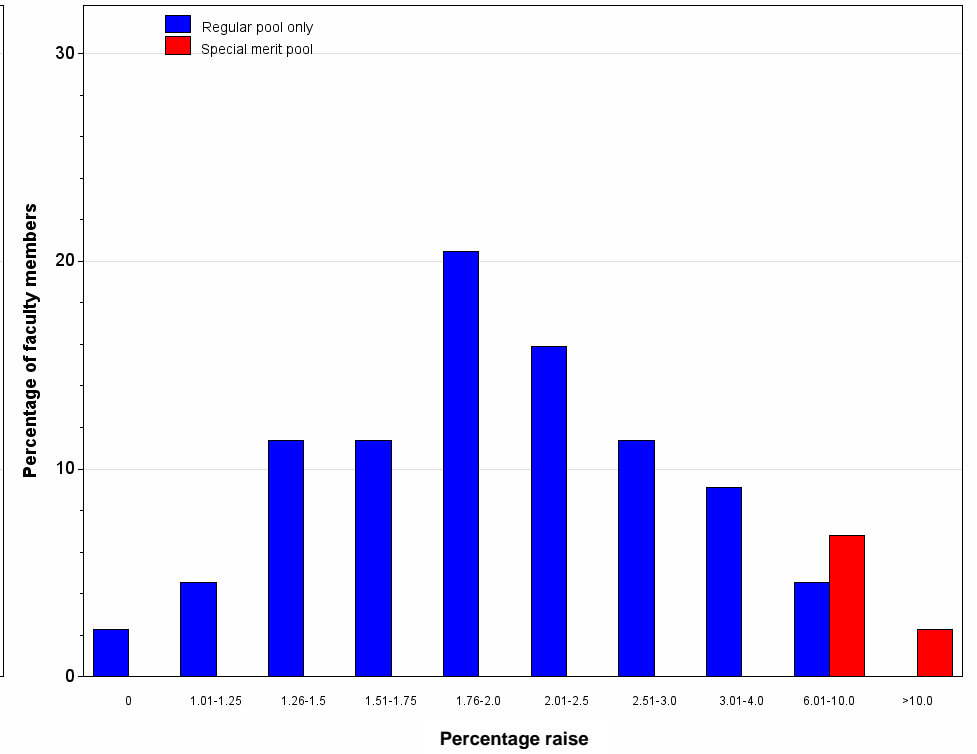
Univariate statistics for faculty raises, by track and funding source for raise

Raise source	Faculty track (TT, NTT)	N	Variable	25th Pctl	Median	Mean	75th Pctl
Regular pool only	TT/T faculty	19	Percent raise	1.50	2.00	3.15	2.50
			Total raise	1408.32	1732.08	3143.98	1970.00
	NTT faculty	40	Percent raise	1.61	2.00	2.30	2.50
			Total raise	1166.34	1311.06	1710.27	1602.12
Special merit pool	TT/T faculty	2	Percent raise	8.60	10.40	10.40	12.20
			Total raise	10156.60	10897.22	10897.22	11637.84
	NTT faculty	4	Percent raise	7.93	8.13	9.93	11.92
			Total raise	5742.64	6821.94	7222.46	8702.28

**Total raise as a percentage of prior year's salary
For TT/T faculty in Health Professions, by funding source for raise**



**Total raise as a percentage of prior year's salary
For NTT faculty in Health Professions, by funding source for raise**



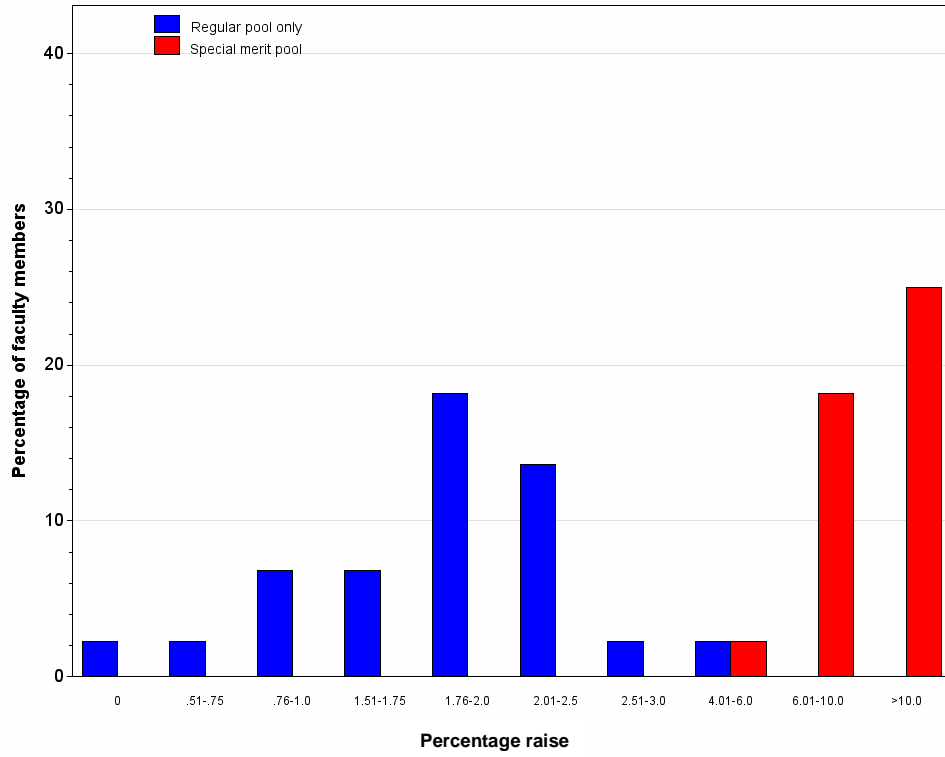
Academic unit = Human Environmental Sciences

Raise percentage	TT/T faculty						NTT faculty				All faculty					
	Regular pool only		Special merit pools		Total		Regular pool only		Total		Regular pool only		Special merit pools		Total	
	Freq	Pct	Freq	Pct	Freq	Pct	Freq	Pct	Freq	Pct	Freq	Pct	Freq	Pct	Freq	Pct
0	1	2.27	.	.	1	2.27	2	18.18	2	18.18	3	5.45	.	.	3	5.45
.51-.75	1	2.27	.	.	1	2.27	1	1.82	.	.	1	1.82
.76-1.0	3	6.82	.	.	3	6.82	3	5.45	.	.	3	5.45
1.51-1.75	3	6.82	.	.	3	6.82	1	9.09	1	9.09	4	7.27	.	.	4	7.27
1.76-2.0	8	18.18	.	.	8	18.18	3	27.27	3	27.27	11	20.00	.	.	11	20.00
2.01-2.5	6	13.64	.	.	6	13.64	4	36.36	4	36.36	10	18.18	.	.	10	18.18
2.51-3.0	1	2.27	.	.	1	2.27	1	9.09	1	9.09	2	3.64	.	.	2	3.64
4.01-6.0	1	2.27	1	2.27	2	4.55	1	1.82	1	1.82	2	3.64
6.01-10.0	.	.	8	18.18	8	18.18	8	14.55	8	14.55
>10.0	.	.	11	25.00	11	25.00	11	20.00	11	20.00
Total	24	54.55	20	45.45	44	100.00	11	100.00	11	100.00	35	63.64	20	36.36	55	100.00

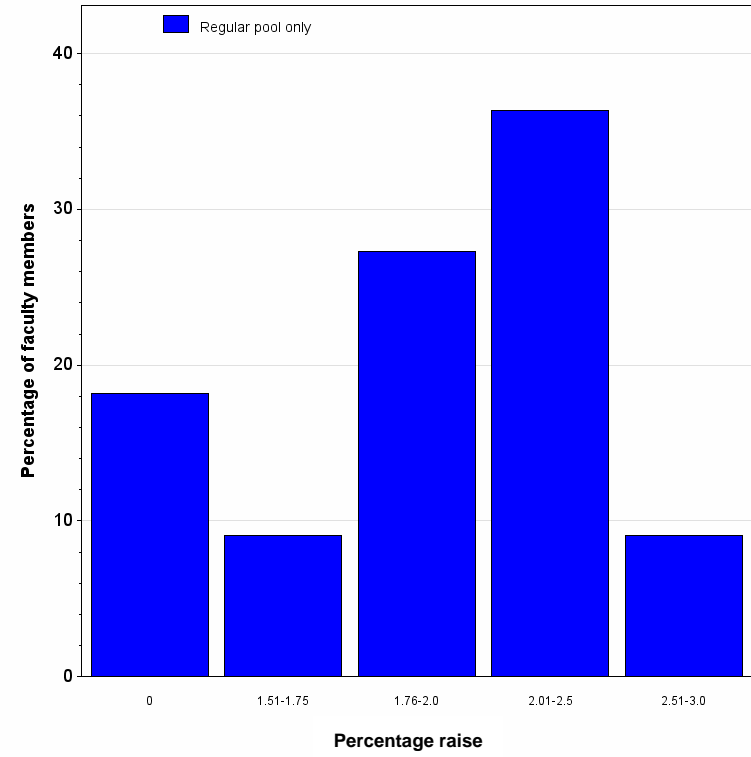
Univariate statistics for faculty raises, by track and funding source for raise

Raise source	Faculty track (TT, NTT)	N	Variable	25th Pctl	Median	Mean	75th Pctl
Regular pool only	TT/T faculty	24	Percent raise	1.56	2.00	1.81	2.02
			Total raise	1039.58	1498.57	1568.56	1880.28
	NTT faculty	11	Percent raise	1.65	2.00	1.67	2.00
			Total raise	960.00	1101.12	1038.71	1302.12
Special merit pool	TT/T faculty	20	Percent raise	9.01	10.19	11.28	13.10
			Total raise	7200.93	9810.54	10039.54	12179.03

**Total raise as a percentage of prior year's salary
For TT/T faculty in Human Environmental Sciences, by funding source for raise**



**Total raise as a percentage of prior year's salary
For NTT faculty in Human Environmental Sciences, by funding source for raise**



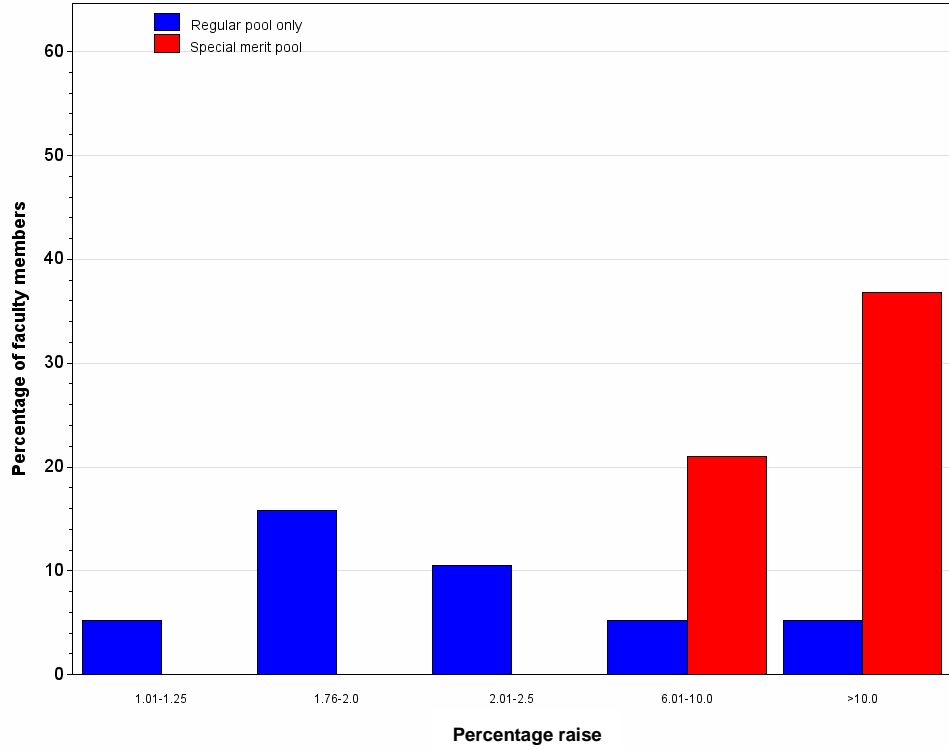
Academic unit = Journalism

Raise percentage	TT/T faculty						NTT faculty						All faculty					
	Regular pool only		Special merit pools		Total		Regular pool only		Special merit pools		Total		Regular pool only		Special merit pools		Total	
	Freq	Pct	Freq	Pct	Freq	Pct	Freq	Pct	Freq	Pct	Freq	Pct	Freq	Pct	Freq	Pct	Freq	Pct
0	2	4.08	.	.	2	4.08	2	2.94	.	.	2	2.94
1.01-1.25	1	5.26	.	.	1	5.26	1	2.04	.	.	1	2.04	2	2.94	.	.	2	2.94
1.51-1.75	1	2.04	.	.	1	2.04	1	1.47	.	.	1	1.47
1.76-2.0	3	15.79	.	.	3	15.79	25	51.02	.	.	25	51.02	28	41.18	.	.	28	41.18
2.01-2.5	2	10.53	.	.	2	10.53	8	16.33	.	.	8	16.33	10	14.71	.	.	10	14.71
2.51-3.0	1	2.04	.	.	1	2.04	1	1.47	.	.	1	1.47
4.01-6.0	1	2.04	1	2.04	2	4.08	1	1.47	1	1.47	2	2.94
6.01-10.0	1	5.26	4	21.05	5	26.32	1	2.04	6	12.24	7	14.29	2	2.94	10	14.71	12	17.65
>10.0	1	5.26	7	36.84	8	42.11	2	4.08	.	.	2	4.08	3	4.41	7	10.29	10	14.71
Total	8	42.11	11	57.89	19	100.00	42	85.71	7	14.29	49	100.00	50	73.53	18	26.47	68	100.00

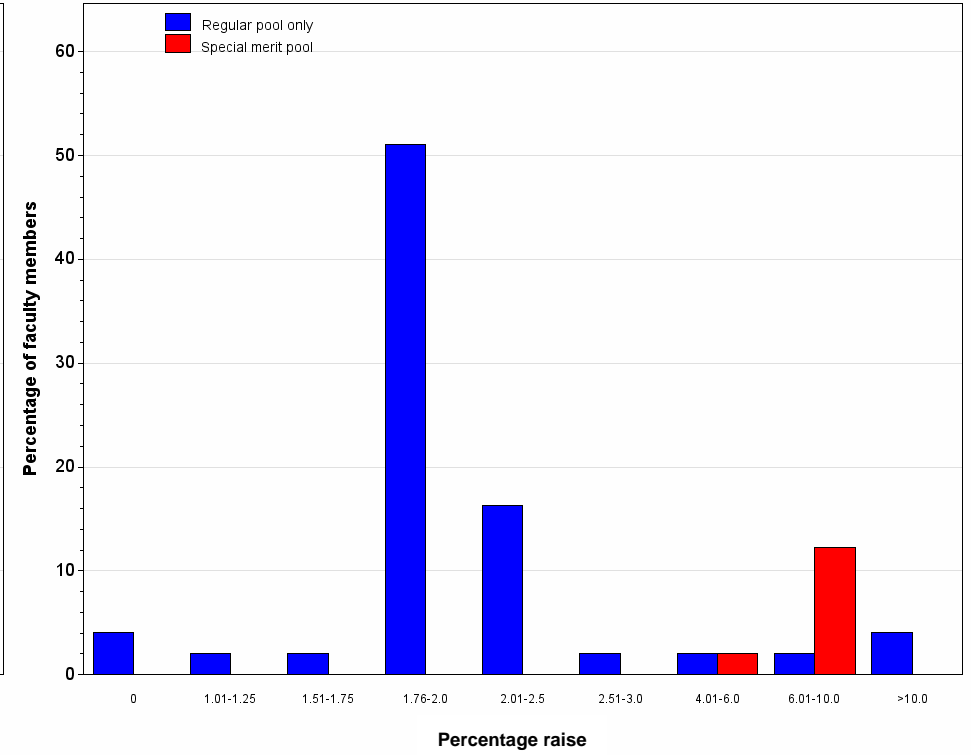
Univariate statistics for faculty raises, by track and funding source for raise

Raise source	Faculty track (TT, NTT)	N	Variable	25th Pctl	Median	Mean	75th Pctl
Regular pool only	TT/T faculty	8	Percent raise	1.96	2.00	3.78	4.30
			Total raise	1847.33	2729.94	3662.02	3722.62
	NTT faculty	42	Percent raise	1.94	2.00	3.20	2.00
			Total raise	1192.08	1283.59	2371.96	1955.28
Special merit pool	TT/T faculty	11	Percent raise	7.62	12.72	12.79	16.51
			Total raise	5621.76	10293.45	10278.13	13149.12
	NTT faculty	7	Percent raise	6.10	6.84	6.93	7.58
			Total raise	3695.76	3872.04	4119.85	4200.00

**Total raise as a percentage of prior year's salary
For TT/T faculty in Journalism, by funding source for raise**



**Total raise as a percentage of prior year's salary
For NTT faculty in Journalism, by funding source for raise**



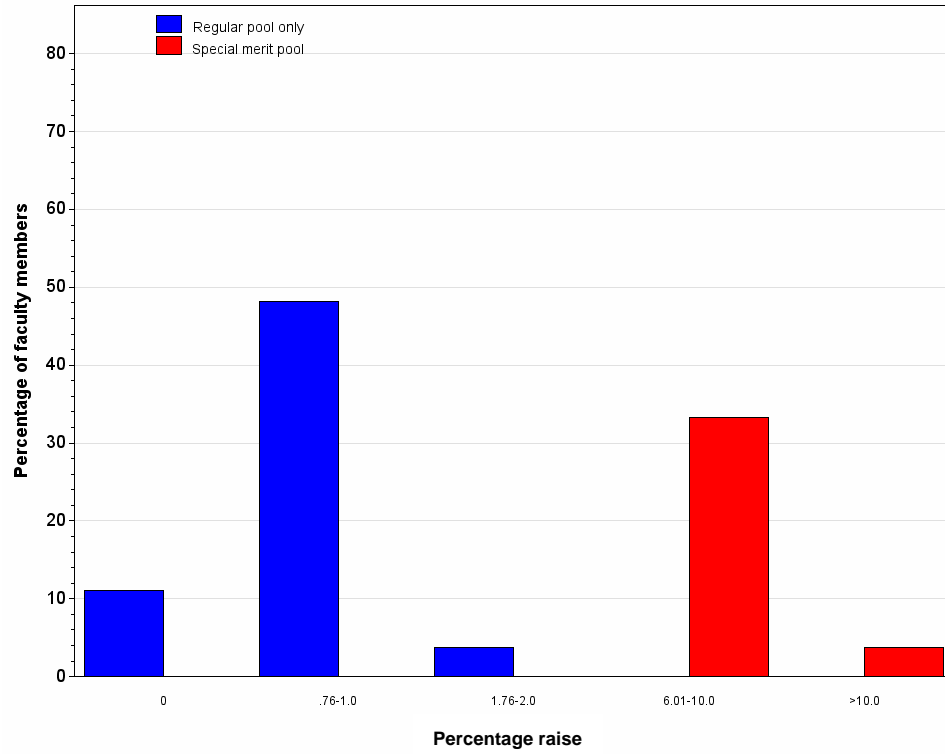
Academic unit = Law

Raise percentage	TT/T faculty						NTT faculty						All faculty					
	Regular pool only		Special merit pools		Total		Regular pool only		Special merit pools		Total		Regular pool only		Special merit pools		Total	
	Freq	Pct	Freq	Pct	Freq	Pct	Freq	Pct	Freq	Pct	Freq	Pct	Freq	Pct	Freq	Pct	Freq	Pct
0	3	11.11	.	.	3	11.11	3	8.82	.	.	3	8.82
.76-1.0	13	48.15	.	.	13	48.15	5	71.43	.	.	5	71.43	18	52.94	.	.	18	52.94
1.01-1.25	1	14.29	.	.	1	14.29	1	2.94	.	.	1	2.94
1.76-2.0	1	3.70	.	.	1	3.70	1	2.94	.	.	1	2.94
6.01-10.0	.	.	9	33.33	9	33.33	.	.	1	14.29	1	14.29	.	.	10	29.41	10	29.41
>10.0	.	.	1	3.70	1	3.70	1	2.94	1	2.94
Total	17	62.96	10	37.04	27	100.00	6	85.71	1	14.29	7	100.00	23	67.65	11	32.35	34	100.00

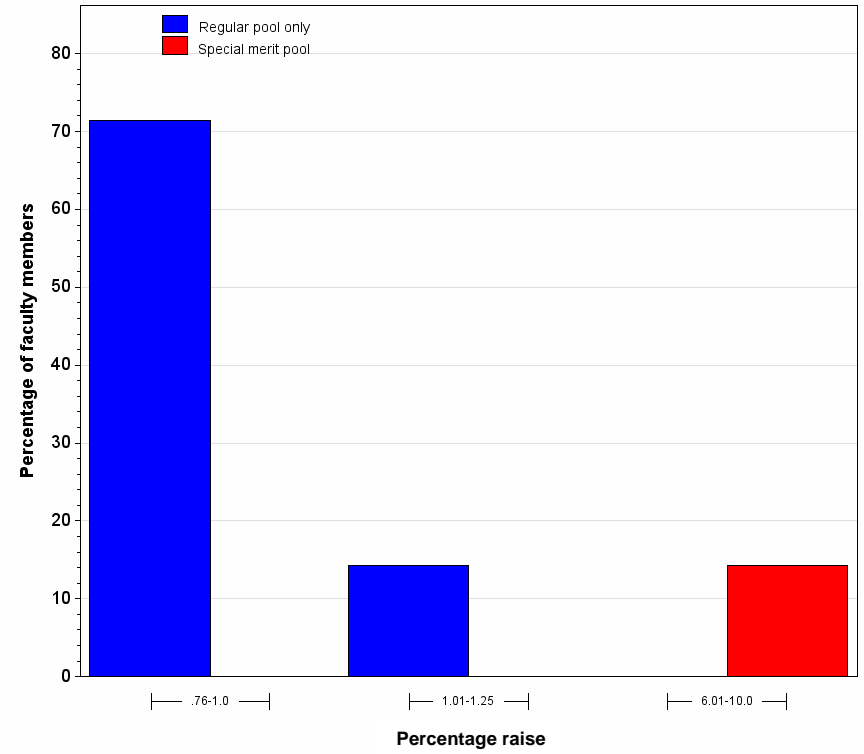
Univariate statistics for faculty raises, by track and funding source for raise

Raise source	Faculty track (TT, NTT)	N	Variable	25th Pctl	Median	Mean	75th Pctl
Regular pool only	TT/T faculty	17	Percent raise	1.00	1.00	0.88	1.00
			Total raise	1018.21	1339.25	1272.53	1646.00
	NTT faculty	6	Percent raise	1.00	1.00	1.00	1.00
			Total raise	800.00	1285.43	1155.17	1303.13
Special merit pool	TT/T faculty	10	Percent raise	7.97	8.84	8.71	9.94
			Total raise	10596.00	11180.67	11139.64	12000.00
	NTT faculty	1	Percent raise	8.52	8.52	8.52	8.52
			Total raise	9800.00	9800.00	9800.00	9800.00

**Total raise as a percentage of prior year's salary
For TT/T faculty in Law, by funding source for raise**



**Total raise as a percentage of prior year's salary
For NTT faculty in Law, by funding source for raise**



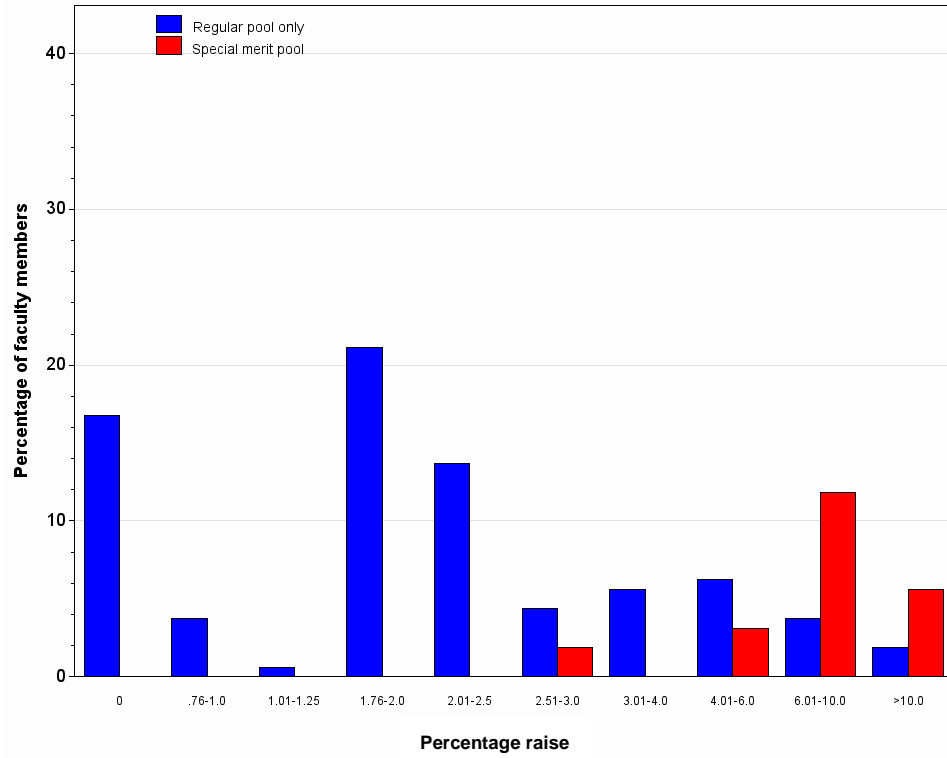
Academic unit = Medicine

Raise percentage	TT/T faculty						NTT faculty						All faculty					
	Regular pool only		Special merit pools		Total		Regular pool only		Special merit pools		Total		Regular pool only		Special merit pools		Total	
	Freq	Pct	Freq	Pct	Freq	Pct	Freq	Pct	Freq	Pct	Freq	Pct	Freq	Pct	Freq	Pct	Freq	Pct
<0	1	0.32	.	.	1	0.32	1	0.21	.	.	1	0.21
0	27	16.77	.	.	27	16.77	56	18.06	.	.	56	18.06	83	17.62	.	.	83	17.62
.01-.25	1	0.32	.	.	1	0.32	1	0.21	.	.	1	0.21
.26-.50	1	0.32	.	.	1	0.32	1	0.21	.	.	1	0.21
.76-1.0	6	3.73	.	.	6	3.73	4	1.29	.	.	4	1.29	10	2.12	.	.	10	2.12
1.01-1.25	1	0.62	.	.	1	0.62	3	0.97	.	.	3	0.97	4	0.85	.	.	4	0.85
1.26-1.5	1	0.32	.	.	1	0.32	1	0.21	.	.	1	0.21
1.51-1.75	17	5.48	.	.	17	5.48	17	3.61	.	.	17	3.61
1.76-2.0	34	21.12	.	.	34	21.12	103	33.23	.	.	103	33.23	137	29.09	.	.	137	29.09
2.01-2.5	22	13.66	.	.	22	13.66	43	13.87	.	.	43	13.87	65	13.80	.	.	65	13.80
2.51-3.0	7	4.35	3	1.86	10	6.21	9	2.90	.	.	9	2.90	16	3.40	3	0.64	19	4.03
3.01-4.0	9	5.59	.	.	9	5.59	22	7.10	1	0.32	23	7.42	31	6.58	1	0.21	32	6.79
4.01-6.0	10	6.21	5	3.11	15	9.32	16	5.16	2	0.65	18	5.81	26	5.52	7	1.49	33	7.01
6.01-10.0	6	3.73	19	11.80	25	15.53	19	6.13	2	0.65	21	6.77	25	5.31	21	4.46	46	9.77
>10.0	3	1.86	9	5.59	12	7.45	8	2.58	1	0.32	9	2.90	11	2.34	10	2.12	21	4.46
Total	125	77.64	36	22.36	161	100.00	304	98.06	6	1.94	310	100.00	429	91.08	42	8.92	471	100.00

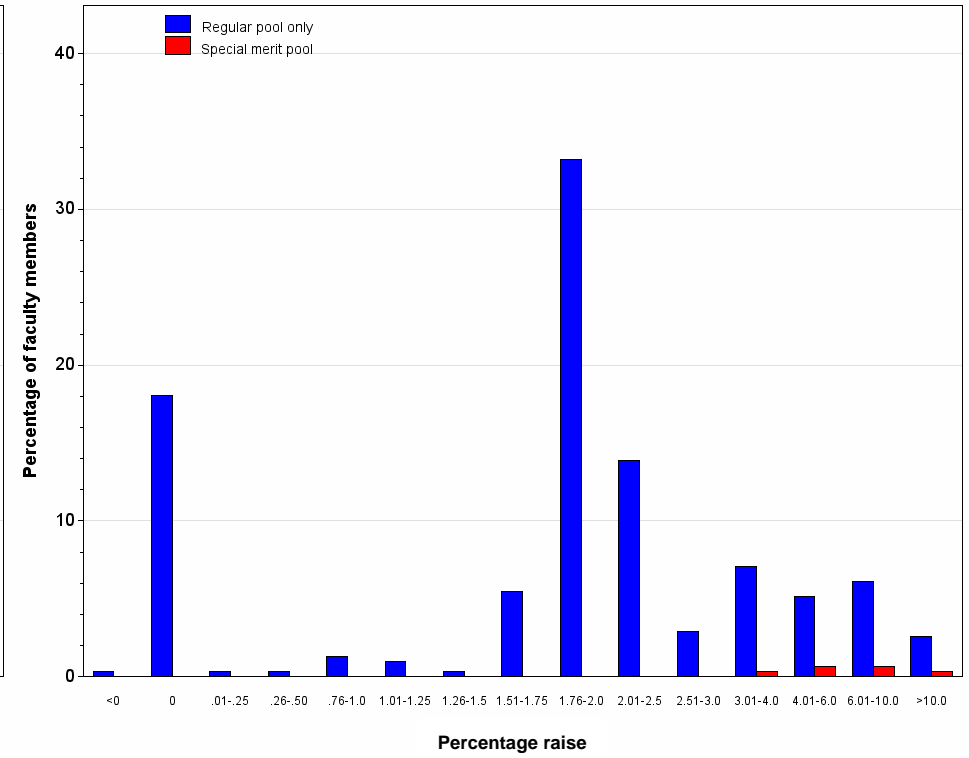
Univariate statistics for faculty raises, by track and funding source for raise

Raise source	Faculty track (TT, NTT)	N	Variable	25th Pctl	Median	Mean	75th Pctl
Regular pool only	TT/T faculty	125	Percent raise	1.00	2.00	2.93	3.00
			Total raise	1085.28	2957.52	6557.89	5306.04
	NTT faculty	304	Percent raise	1.75	2.00	2.46	2.36
			Total raise	1589.40	3084.42	4245.43	5100.24
Special merit pool	TT/T faculty	36	Percent raise	6.08	7.12	8.41	9.98
			Total raise	8347.62	12108.00	12520.36	14891.16
	NTT faculty	6	Percent raise	4.04	5.95	6.70	8.16
			Total raise	7544.52	9017.58	10281.34	13297.92

**Total raise as a percentage of prior year's salary
For TT/T faculty in Medicine, by funding source for raise**



**Total raise as a percentage of prior year's salary
For NTT faculty in Medicine, by funding source for raise**



Amount of raise, by track and funding source for raise

Academic unit = Nuclear Science and Engineering Institute*

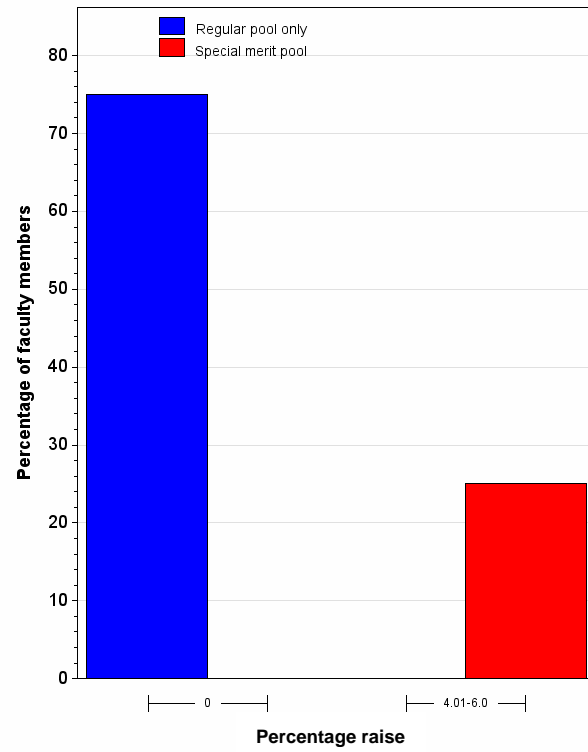
Raise percentage	TT/T faculty						All faculty					
	Regular pool only		Special merit pools		Total		Regular pool only		Special merit pools		Total	
	Freq	Pct	Freq	Pct	Freq	Pct	Freq	Pct	Freq	Pct	Freq	Pct
0	3	75.00	.	.	3	75.00	3	75.00	.	.	3	75.00
4.01-6.0	.	.	1	25.00	1	25.00	.	.	1	25.00	1	25.00
Total	3	75.00	1	25.00	4	100.00	3	75.00	1	25.00	4	100.00

Univariate statistics for faculty raises, by track and funding source for raise

Raise source	Faculty track (TT, NTT)	N	Variable	25th Pctl	Median	Mean	75th Pctl
Regular pool only	TT/T faculty	3	Percent raise	0.00	0.00	0.00	0.00
			Total raise	0.00	0.00	0.00	0.00
Special merit pool	TT/T faculty	1	Percent raise	5.00	5.00	5.00	5.00
			Total raise	9885.00	9885.00	9885.00	9885.00

Note: Faculty in NSEI were in the Graduate School during the previous academic year, and are now in Engineering.

**Total raise as a percentage of prior year's salary
For TT/T faculty in NSEI, by funding source for raise**



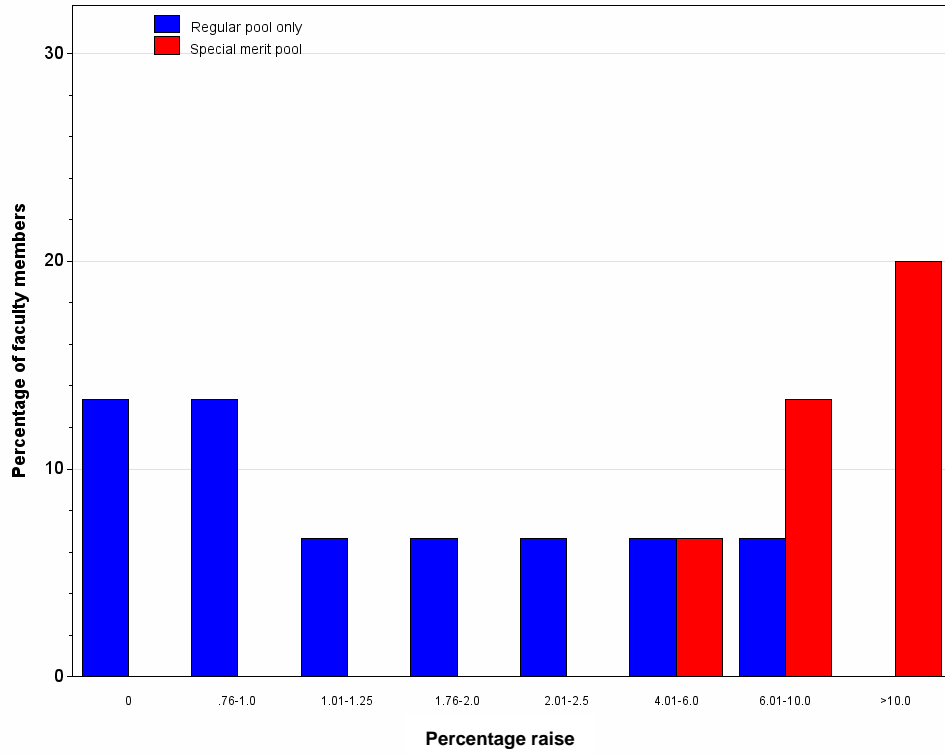
Academic unit = Nursing

Raise percentage	TT/T faculty						NTT faculty						All faculty					
	Regular pool only		Special merit pools		Total		Regular pool only		Special merit pools		Total		Regular pool only		Special merit pools		Total	
	Freq	Pct	Freq	Pct	Freq	Pct	Freq	Pct	Freq	Pct	Freq	Pct	Freq	Pct	Freq	Pct	Freq	Pct
0	2	13.33	.	.	2	13.33	2	28.57	.	.	2	28.57	4	18.18	.	.	4	18.18
.76-1.0	2	13.33	.	.	2	13.33	2	9.09	.	.	2	9.09
1.01-1.25	1	6.67	.	.	1	6.67	1	14.29	.	.	1	14.29	2	9.09	.	.	2	9.09
1.76-2.0	1	6.67	.	.	1	6.67	1	14.29	.	.	1	14.29	2	9.09	.	.	2	9.09
2.01-2.5	1	6.67	.	.	1	6.67	1	4.55	.	.	1	4.55
2.51-3.0	1	14.29	.	.	1	14.29	1	4.55	.	.	1	4.55
4.01-6.0	1	6.67	1	6.67	2	13.33	1	4.55	1	4.55	2	9.09
6.01-10.0	1	6.67	2	13.33	3	20.00	.	.	1	14.29	1	14.29	1	4.55	3	13.64	4	18.18
>10.0	.	.	3	20.00	3	20.00	.	.	1	14.29	1	14.29	.	.	4	18.18	4	18.18
Total	9	60.00	6	40.00	15	100.00	5	71.43	2	28.57	7	100.00	14	63.64	8	36.36	22	100.00

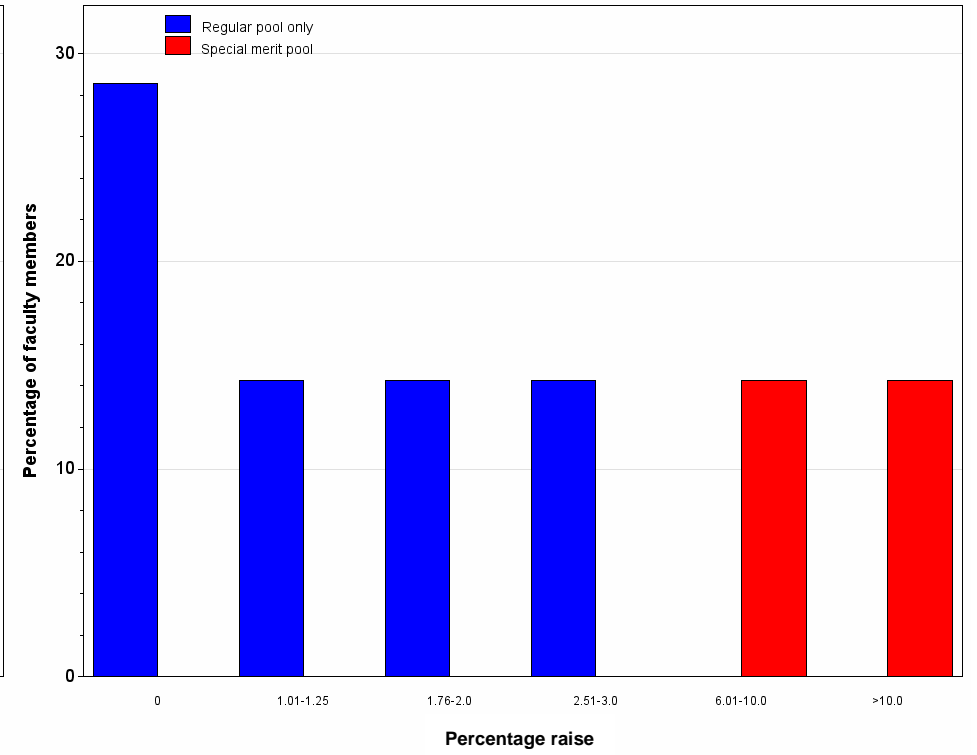
Univariate statistics for faculty raises, by track and funding source for raise

Raise source	Faculty track (TT, NTT)	N	Variable	25th Pctl	Median	Mean	75th Pctl
Regular pool only	TT/T faculty	9	Percent raise	1.00	1.00	2.14	2.00
			Total raise	678.30	830.66	1578.66	1544.38
	NTT faculty	5	Percent raise	0.00	1.00	1.20	2.00
			Total raise	0.00	606.06	667.98	1236.24
Special merit pool	TT/T faculty	6	Percent raise	6.05	10.41	9.90	13.85
			Total raise	5332.44	9665.28	11001.07	14576.24
	NTT faculty	2	Percent raise	9.00	9.50	9.50	10.00
			Total raise	4379.88	4859.14	4859.14	5338.39

**Total raise as a percentage of prior year's salary
For TT/T faculty in Nursing, by funding source for raise**



**Total raise as a percentage of prior year's salary
For NTT faculty in Nursing, by funding source for raise**



Amount of raise, by track and funding source for raise

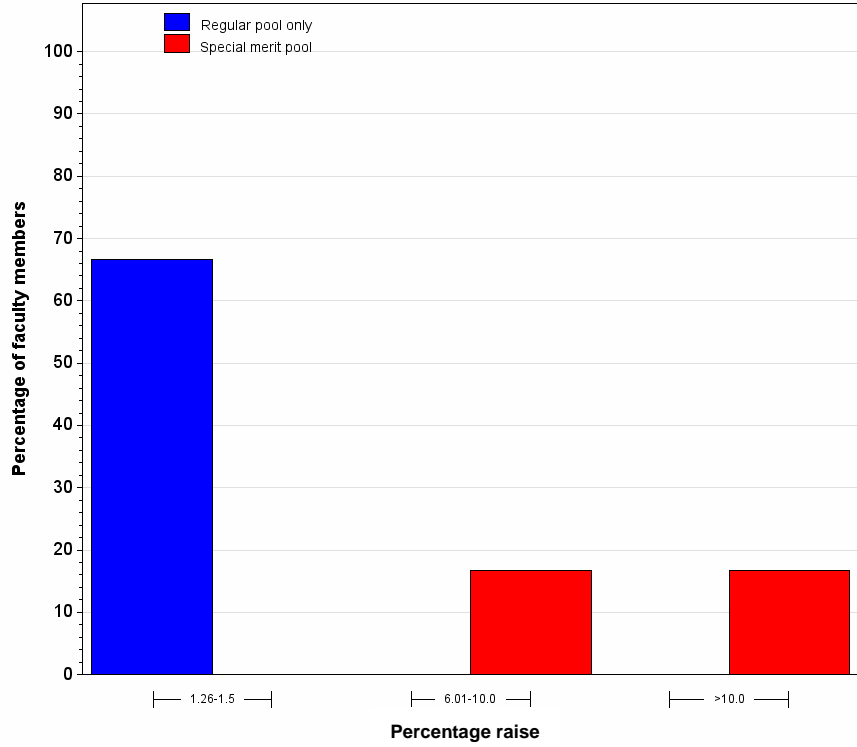
Academic unit = Public Affairs

Raise percentage	TT/T faculty						NTT faculty				All faculty					
	Regular pool only		Special merit pools		Total		Regular pool only		Total		Regular pool only		Special merit pools		Total	
	Freq	Pct	Freq	Pct	Freq	Pct	Freq	Pct	Freq	Pct	Freq	Pct	Freq	Pct	Freq	Pct
0	1	100.00	1	100.00	1	14.29	.	.	1	14.29
1.26-1.5	4	66.67	.	.	4	66.67	4	57.14	.	.	4	57.14
6.01-10.0	.	.	1	16.67	1	16.67	1	14.29	1	14.29
>10.0	.	.	1	16.67	1	16.67	1	14.29	1	14.29
Total	4	66.67	2	33.33	6	100.00	1	100.00	1	100.00	5	71.43	2	28.57	7	100.00

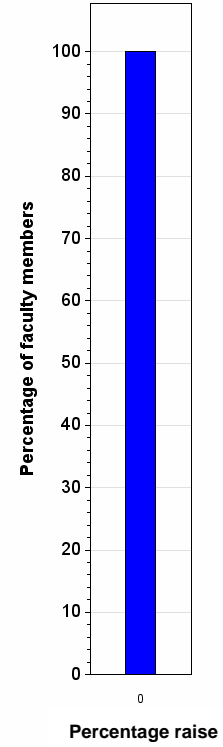
Univariate statistics for faculty raises, by track and funding source for raise

Raise source	Faculty track (TT, NTT)	N	Variable	25th Pctl	Median	Mean	75th Pctl
Regular pool only	TT/T faculty	4	Percent raise	1.38	1.50	1.44	1.50
			Total raise	1145.64	1257.34	1598.33	2051.02
	NTT faculty	1	Percent raise	0.00	0.00	0.00	0.00
			Total raise	0.00	0.00	0.00	0.00
Special merit pool	TT/T faculty	2	Percent raise	9.40	14.58	14.58	19.76
			Total raise	7286.48	13433.06	13433.06	19579.65

**Total raise as a percentage of prior year's salary
For TT/T faculty in Public Affairs, by funding source for raise**



**Total raise as a percentage of prior year's salary
For NTT faculty in Public Affairs, by funding source for raise**



Academic unit = Veterinary Medicine

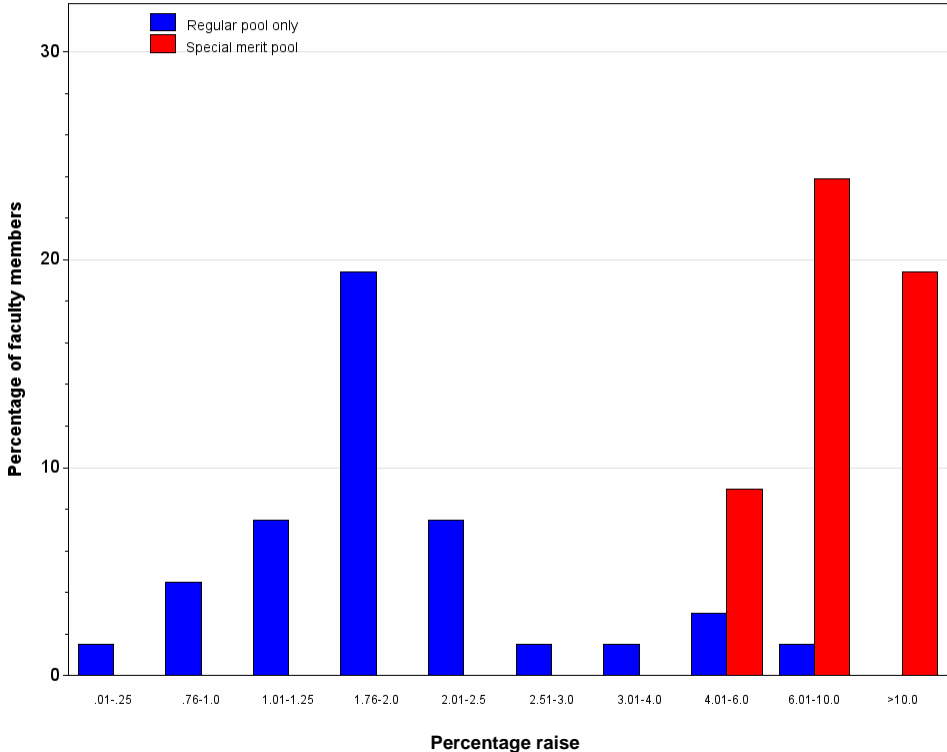
Raise percentage	TT/T faculty						NTT faculty						All faculty					
	Regular pool only		Special merit pools		Total		Regular pool only		Special merit pools		Total		Regular pool only		Special merit pools		Total	
	Freq	Pct	Freq	Pct	Freq	Pct	Freq	Pct	Freq	Pct	Freq	Pct	Freq	Pct	Freq	Pct	Freq	Pct
0	4	10.53	.	.	4	10.53	4	3.81	.	.	4	3.81
.01-.25	1	1.49	.	.	1	1.49	1	0.95	.	.	1	0.95
.76-1.0	3	4.48	.	.	3	4.48	3	2.86	.	.	3	2.86
1.01-1.25	5	7.46	.	.	5	7.46	5	4.76	.	.	5	4.76
1.76-2.0	13	19.40	.	.	13	19.40	9	23.68	.	.	9	23.68	22	20.95	.	.	22	20.95
2.01-2.5	5	7.46	.	.	5	7.46	9	23.68	.	.	9	23.68	14	13.33	.	.	14	13.33
2.51-3.0	1	1.49	.	.	1	1.49	2	5.26	.	.	2	5.26	3	2.86	.	.	3	2.86
3.01-4.0	1	1.49	.	.	1	1.49	3	7.89	.	.	3	7.89	4	3.81	.	.	4	3.81
4.01-6.0	2	2.99	6	8.96	8	11.94	7	18.42	.	.	7	18.42	9	8.57	6	5.71	15	14.29
6.01-10.0	1	1.49	16	23.88	17	25.37	3	7.89	1	2.63	4	10.53	4	3.81	17	16.19	21	20.00
>10.0	.	.	13	19.40	13	19.40	13	12.38	13	12.38
Total	32	47.76	35	52.24	67	100.00	37	97.37	1	2.63	38	100.00	69	65.71	36	34.29	105	100.00

Univariate statistics for faculty raises, by track and funding source for raise

Academic unit = Veterinary Medicine

Raise source	Faculty track (TT, NTT)	N	Variable	25th Pctl	Median	Mean	75th Pctl
Regular pool only	TT/T faculty	32	Percent raise	1.19	2.00	2.04	2.00
			Total raise	1408.74	2364.60	2503.83	2811.06
	NTT faculty	37	Percent raise	2.00	2.28	2.89	4.00
			Total raise	2000.04	2461.80	2892.28	3080.04
Special merit pool	TT/T faculty	35	Percent raise	7.41	9.00	9.37	11.12
			Total raise	8300.04	11858.16	11559.12	14010.60
	NTT faculty	1	Percent raise	7.65	7.65	7.65	7.65
			Total raise	6771.68	6771.68	6771.68	6771.68

**Total raise as a percentage of prior year's salary
For TTT/T faculty in Veterinary Medicine, by funding source for raise**



**Total raise as a percentage of prior year's salary
For NTT faculty in Veterinary Medicine, by funding source for raise**

